

MP21DX



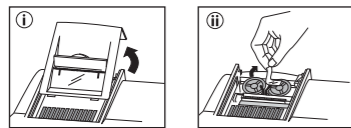
E-IM-3406

Instruction manual website
<https://global.canon/calmanual>

BEFORE STARTING

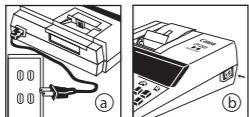
ENGLISH

- Remove the tape on the ink ribbon of the calculator before use.



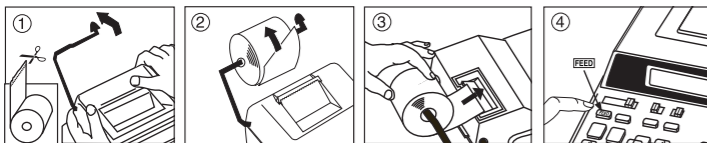
POWER ON/OFF SWITCH

- Be sure to remove the insulation tape at the back of the calculator before connecting AC cord with your machine.
- Plug in AC power cord. (Figure ②)
- Plug in AC power cord. (Figure ②)
- Turn power switch on. (Power switch is located on the right side of the cabinet.) "C" will automatically be printed on the paper tape if the switch is set to print. (Figure ②)



INSTALLING PRINTING PAPER

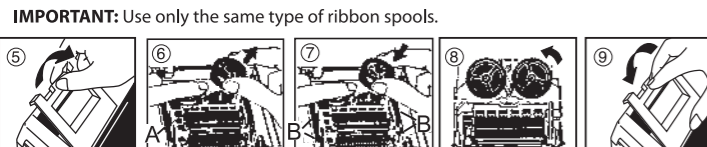
- Lift up the arm (Figure ①).
 - When inserting the paper, cut the edge of the paper as shown.
- Place the new paper roll on the arm. The edge of the paper should be positioned as shown (Figure ②).
 - Suitable paper roll – Width: 2-1/4" (57mm)
Diameter: 3-3/8" (86mm) max.
- Insert the paper into the slit at the back of the machine as indicated. (Figure ③)
- Turn the power switch on. Press the paper feed key **FEED** to advance the paper as shown. (Figure ④)



REPLACING THE INK RIBBON

Note: Turn the power switch off.

- Lift up the tab on the back-side of the printer cover, and then remove the cover. (Figure ⑤)
- While pinching together the ribbon lock (A) in the direction of arrow, lift ribbon spools off the shafts. Discard the old ribbon and spools. (Figure ⑥)
- Separate the spools of new ribbon between the tape and printer head. Guide it around the four positions of the ribbon guide (B) and place the spools on the shafts. (Figure ⑦)
- When the ribbon spools have settled, release the ribbon locks. If necessary, rotate the spools until the pegs on the bottom of the spool seat themselves in the holes of the spool holder. (Figure ⑧)
- Rotate either spool to take up any ribbon slack, making sure that the ribbon is positioned around the four ribbon guides. Replace the printer cover. (Figure ⑨)



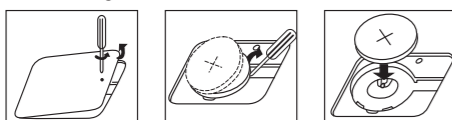
REPLACING BACKUP BATTERY

Memory backup battery retains the tax rate, calendar and clock setting, when the power is off or even when the AC cord is disconnected.

Battery : 1 Lithium battery (Type : CR2032; 3V)

Battery life : Backup time 2000 hours

CAUTION: Risk of explosion if battery is replaced by an incorrect type. Dispose of used batteries according to the instruction.



PRINT ON/OFF SWITCH

- Entries and results will appear on the display but will not be printed out.
- Entries and results will appear on the display and printout.

ITEM COUNT SWITCH



- At "n+" or "n+/-" position, the calculator count and print the number of calculation items up to 999.

ITEM COUNTER

- When the "ITEM" switch is set at "n+", the calculator counts the number of times the **[+]** and **[-]** keys are pressed.
- When the switch is set at "n+/-", the calculator counts the number of times the **[+]** key is pressed and subtracts from the total numbers of times the **[-]** key is pressed.

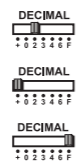
MEMORY ITEM COUNT

- When the "ITEM" switch is set at "n+", the calculator counts number of times **[M+]** and **[M-]** keys are pressed.
- When the switch is set at "n+/-", the calculator counts the number of times the **[M+]** key is pressed and subtracts from the total number of times the **[M-]** key is pressed.

PRINTOUT OF ITEM COUNT

- When the PRINT switch is turned "ON", and the "ITEM" switch is at the "n+" or "n+/-" position, the number of items recorded by the counter can print up to three digits on the left-hand side of the paper by pressing either the **[C]** key or the **[X]** key for item count and **[M+]** key or **[M-]** key for memory item count.

DECIMAL POINT SELECTOR SWITCH



- Used for designating the decimal point position (+, 0, 2, 3, 4, 6, F) for calculated results.
- Addition and subtraction functions are performed with an automatic 2-digit decimal. It is convenient for currency calculations.
- All effective numbers up to 12 digits are printed or displayed.

ROUNDING SWITCH



- Used for round-up [**↑**], round-off [5/4], or round-down [**↓**] to the pre-selected decimal digits in the result.

GRAND TOTAL / RATE SET SWITCH



- When the calculations are performed with the GT switch set to "ON", the totals are accumulated in the grand total memory. Each time **[X]** is pressed, the subtotal number is printed with the symbols G+. When **[GT]** is pressed, the intermediate grand total is printed with the symbols G◇. Press **[GT]** successively to get the grand total followed by the symbols G✱.



- Set switch to "RATE" for setting or recalling the TAX rate.

OVERFLOW FUNCTION

In the following cases, when "E" is displayed, the keyboard is electronically locked, and further operation is impossible. Press **[CE]** to clear the overflow. The overflow function occurs when:

- The result or the memory content exceeds 12 digits to the left of the decimal point.
- Dividing by "0".
- The sequential operation speed is faster than the calculation processing speed.

(Buffer Register Overflow)

Electromagnetic interference or electrostatic discharge may cause the display to malfunction or the contents of the memory to be lost or altered.

Should this occur, use the tip of a ballpoint pen (or similar sharp object) to press the [RESET] button at the back of the calculator. After resetting, be sure to set the tax rate again.



SPECIFICATIONS

Power Source: AC 120V, 60Hz
 Operation Temperature: 32°F to 104°F (0°C to 40°C)
 Calculating Capacity: 12 digits maximum
 Dimension: 306mm(L) x 230mm(W) x 75mm(H) / 12-3/64"(L) x 9-1/16"(W) x 2-61/64"(H)
 Weight: 1.74 kg (3.84 lb)
 (Subject to change without notice)

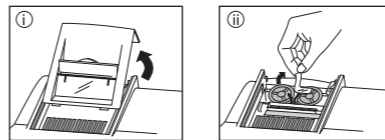
The socket-outlet shall be installed near the equipment and shall be easily accessible. For CA, USA Only

Included battery contains perchlorate material - special handling may apply.

See <http://www.dtsc.ca.gov/hazardouswaste/perchlorate/> for detail.

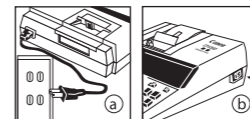
ANTES DE EMPEZAR

- Remueva la tapa de la cinta gris la calculadora antes de utilizarla.



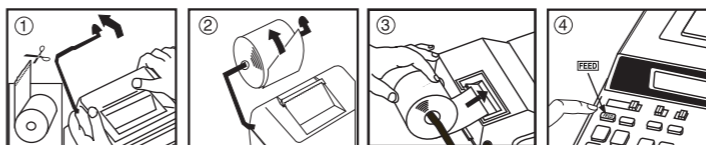
ENCENDIDO / APAGADO

- Asegúrese de quitar la cinta aislante en la parte trasera de la calculadora antes de conectar el cable de CA a la máquina.
- Enchufe el cable de CA. (Figura ②)
- Enciendala. Automaticamente será impreso en el papel "C". El interruptor está localizado en el lado derecho del aparato. (Figure ②)



INSTALANDO PAPEL DE IMPRESIÓN

- Levantar la cubierta de la impresora. (Figura ①)
 - Antes de introducir el papel, corte el borde del papel como se muestra.
- Coloque el nuevo rollo de papel en el brazo de la calculadora. El borde del papel deberá ser colocado como se muestra en la (Figura ②).
 - Rollo de papel adecuado – Ancho: 2-1/4" (57mm)
Diámetro: 3-3/8" (86mm) max.
- Introduzca el papel en la ranura posterior de la máquina, como se indica en la. (Figura ③)
- Encienda la calculadora. Presione la tecla de avance de papel **FEED** para avanzar el papel como se muestra. (Figura ④)



COMO CAMBIAR LA CINTA

Nota: Apáguela.

- Levante la pestaña del lado posterior de la tapa de la impresora y luego retire la tapa. (Figura ⑤)
- Mientras sostiene el seguro de la cinta (A) en la dirección de las flechas, levante los carretes de cinta del eje. Deseche la cinta y carretes viejos. (Figura ⑥)
- Separe los carretes de cinta nueva entre la cinta y la cabeza de la impresora. Guíe la cinta alrededor de las cuatro guías de cinta (B) y coloque los carretes encima de los ejes. (Figura ⑦)
- Permita que los carretes se asienten y suelte los seguros de cinta. Si es necesario, gire los carretes hasta que las clavijas en la base encajen en los huecos del soporte de carrete. (Figura ⑧)
- Gire cualquiera de los carretes para templar la cinta y asegúrese que la cinta pase por las cuatro guías de cinta. Coloque nuevamente la cubierta de la impresora. (Figura ⑨)

NOTA IMPORTANTE: Utilice únicamente el mismo tipo de carretes de cinta y coloque la cinta de la manera indicada.



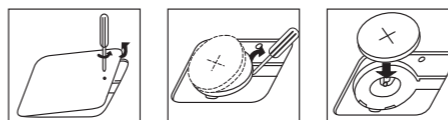
REEMPLAZO DE LA BATERÍA DE RESPALDO

La batería de seguridad de la memoria conserva la carga cuando se interrumpe la alimentación o incluso cuando se desconecta el cable de CA.

Pila : 1 pila de litio (Type : CR2032; 3V)

Duración de la pila : Tiempo de backup 2000 horas.

PRECAUCIÓN: Existe un riesgo de explosión si se utiliza un tipo de batería incorrecto. Siga las instrucciones para desechar las baterías.



IMPRESIÓN / ENCENDIDO

- Entradas y resultados aparecerán en la pantalla, pero no serán impresos.
- Entradas y resultados aparecerán en pantalla y serán impresos.

CONMUTADOR CONTADOR DE ENTRADAS



- Este conmutador activa la cuenta e impresión del número de ítems hasta 999.

CONTADOR DE ENTRADAS

- Cuando el contador de n° de entradas está situado en n+, la calculadora contará el n° de veces que las teclas **[+]** y **[-]** se presionan. Cuando el contador de n° de entradas está situado en n+/- la calculadora contará el n° de veces que se presiona la tecla **[+]** y restará del total el n° de veces que se presiona la tecla **[-]**.

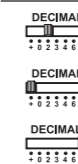
CONTADOR DE ENTRADAS DE MEMORIA

- Cuando el contador de n° de entradas está situado en n+, la calculadora contará el n° de veces que las teclas **[M+]** y **[M-]** se presionan. Cuando el contador de n° de entradas está situado en n+/- la calculadora contará el n° de veces que se presiona la tecla **[M+]** y restará del total el n de veces que se presiona la tecla **[M-]**.

IMPRESIÓN DE LA CUENTA DE ÍTEMS

- Cuando el interruptor de impresión "PRINT" se posiciona en ON, y el interruptor de cuenta de entradas (ITEM) está en la posición n+ o n+/-, puede imprimirse el número de entradas registradas por el contador, hasta tres dígitos, en la izquierda del papel, presionando la tecla **[C]** o la tecla **[X]** para la cuenta de entradas y la tecla **[M+]** o la tecla **[M-]** para la memoria de cuenta de entradas.

INTERRUPTOR SELECTOR DE PUNTO DECIMAL



- Utilizado para designar la posición del punto decimal para (+, 0, 2, 3, 4, 6, F) los resultados calculados.
- Las adiciones y subtracciones son realizadas con dos dígitos decimales automáticamente. Es conveniente para cálculos monetarios.
- Todos los números efectivos hasta 12 dígitos son impresos o desplegados.

CONMUTADOR DE REDONDEO



- Es usado para redondear el resultado hacia arriba [**↑**], redondear [5/4], o redondear hacia abajo [**↓**] a la cantidad de decimales pre-seleccionados.

TECLA DE GRAN TOTAL / RATE SET

GRAND TOTAL



- Cuando los cálculos son realizados con el conmutador GT colocado en Activado (ON), los totales son acumulados en el registro de gran total. Cada vez que usted presiona **[X]**, el subtotal y el símbolo G+ son impresos. Cuando usted presiona la tecla **[GT]**, el gran total intermedio es desplegado e impreso con el símbolo G◇. Presione **[GT]** por segunda vez para obtener el gran total seguido por el símbolo G✱.

RATE SET



- Sítue el interruptor en "RATE" Para fijarlo en el modo de conversión "TAX"

FUNCIÓN DE REBOSE

En los siguientes casos, cuando aparece una "E" en la pantalla, el teclado se bloquea electrónicamente, y la operación subsiguiente no es posible, presione **[CE]** para borrar el rebose. La función de rebose ocurre cuando:

- El resultado o el contenido de la memoria excede de 12 dígitos a la izquierda del punto decimal.
- Divide por "0"
- La velocidad de la operación secuencial es más rápida que la velocidad del proceso de cálculo. (Rebosamiento del registro de la memoria intermedia)

Las interferencias eléctricas o la electricidad estática pueden ocasionar mal funcionamiento de la pantalla o la pérdida del contenido de la memoria. En caso de que esto se produzca, pulse la tecla [RESET], y reinicie el funcionamiento de su calculadora. Después de reiniciar, asegúrese de introducir nuevamente los valores de cambio e impuestos.



ESPECIFICACIONES

Suministro de Energía: CA120V 60Hz
 Temperatura de operación: 32°F a 104°F (0°C a 40°C)
 Capacidad de Cálculos: Máximo de 12 dígitos
 Dimensiones: 306mm (longitud) x 230mm (ancho) x 75mm (alto)
 12-3/64" (longitud) x 9-1/16" (ancho) x 2-61/64" (alto)
 Peso: 1.74 kg (3.84 lb)
 (Sujeto a cambios sin previo aviso)

La toma de corriente debe estar instalarse cerca del equipo y debe ser fácilmente accesible. Para el Ca, los E.E.U.U. Solamente
 La batería incluida contiene el material del perclorato - El manejo especial debe ser aplicado. Para el detalle, por favor ver <http://www.dtsc.ca.gov/hazardouswaste/perchlorate>

CALCULATION EXAMPLES / EJEMPLOS DE CÁLCULO

SETTING / AJUSTE:



■ If switches below do not match the example, please set switches as shown.

■ Si los conmutadores siguientes no son mostrados como en la explicación, póngalos como sigue a continuación.

Calculation / Cálculo	Operation / Operación	Print Out / Imprimir
2+(3x4)-5=9	2 3 4 =	0. C 2.00 + 3. x 4. = 12.00 * 12.00 + 5.00 - 9.00 *
-2x3=-6	2 3 =	2. -x 3. = 6.00 -x
3 ³ =27	3 =	3. x 3. = 9.00 * 9.00 = 27.00 *
1/7=0.14285714285	DECIMAL 7 =	7. ÷ 7. = 1.000 * 1.000 = 0.143 *
\$12.55+\$15.75-\$5.30 =\$23.00	DECIMAL 1255 1575 530 =	0. C 12.55 + 15.75 + 5.30 - 23.00 *
8÷3x3.7+9=18.8666666666	DECIMAL 8 3 3.7 9 =	8. ÷ 3. x 3.7 = 9.86666666664 * 9.86666666664 + 9. + 18.8666666666 *
123x756=56,088	DECIMAL 123 756 456 =	123. x 456. = 56,088.00 *
123x456=56,088	DECIMAL 123 456 6 =	123. x 456. = 56,088.00 *

MEMORY CALCULATION / CÁLCULOS CON MEMORIA

Calculation / Cálculo	Operation / Operación	Print Out / Imprimir
125+78 = 203 -) 75+103 = 178 ----- 25	125 78 =	0. C 125.00 + 78.00 + 203.00 * 203.00 M+ 75.00 + 103.00 + 178.00 * 178.00 M- 25.00 M◇ 25.00 Mx

GRAND TOTAL CALCULATION / CÁLCULO DEL GRAND TOTAL

Calculation / Cálculo	Operation / Operación	Print Out / Imprimir
500+103+32=635 500+96+44=640 +) 500+84+38 =622 ----- 1,897	GT 500 103 32 =	500.00 + 103.00 + 32.00 + 635.00 G+ 500.00 + 96.00 + 44.00 + 640.00 G+ 500.00 + 84.00 + 38.00 + 622.00 G+ 1,897.00 G ◇ 1,897.00 G *

ITEM COUNT / CUENTA DE ARTICULO

Calculation / Cálculo	Operation / Operación	Print Out / Imprimir
18 1) 14 2) +) 23 3) ----- 55 -) 20 4) +) 10 5) ----- 45	GT ITEM 18 14 23 =	18.00 + 14.00 + 23.00 + 003 55.00 ◇ 20.00 - 10.00 + 005 45.00 *

PERCENTAGE CALCULATION / CÁLCULOS DE PORCENTAJE

Calculation / Cálculo	Operation / Operación	Print Out / Imprimir
2,000+(2,000x12%) =2,240	ITEM 2000 12 =	2,000. x 12. % 240.00 * 2,240.00 +%
2,000-(2,000x15%) =1,700	ITEM 2000 15 =	2,000. x 15. % 300.00 * 1,700.00 -%

DELTA PERCENT CALCULATION / CÁLCULOS DE DELTA PORCENTAJE

Calculation / Cálculo	Operation / Operación	Print Out / Imprimir
Last year sales \$15,000 This year sales \$18,000 Increased ratio = ? (20%)	15000 18000 =	15,000. Δ 18,000. = 3,000.00 Δ* 20.00 Δ%

DATA PRINTOUT / IMPRESIÓN DE LOS DATOS

Calculation / Cálculo	Operation / Operación	Print Out / Imprimir
July 16 2008 1,860 1,420	7 16 2008 =	# 7.16.2008 1,860.00 + 1,420.00 +
July 17 2008 2,380 2,200 +) 7,860	7 17 2008 =	# 7.17.2008 2,380.00 + 2,200.00 + 7,860.00 *

MARK-UP, MARK-DOWN CALCULATION / CÁLCULO DEL PRECIO DE VENTA, COSTE

Calculation / Cálculo	Operation / Operación	Print Out / Imprimir
Mark-up Cost \$2,000 Profit=20% of selling Price Profit=? (\$500) Selling Price=? (\$2,500)	2000 20 =	2,000. M 20. % 500.00 Δ* 2,500.00 *
Mark-down Selling Price \$2,400 Profit=20% of cost Profit=? (\$400) Cost=? (\$2,000)	2400 20 =	2,400. M 20. -% 400.00 Δ* 2,000.00 *

For USA only

WARNING

- **INGESTION HAZARD:** This product contains a button cell or coin battery.
- **DEATH** or serious injury can occur if ingested.
- A swallowed button cell or coin battery can cause **Internal Chemical Burns** in as little as **2 hours**.
- **KEEP** new and used batteries **OUT OF REACH** of CHILDREN.
- **Seek immediate medical attention** if a battery is suspected to be swallowed or inserted inside any part of body.

TAX CALCULATION FUNCTION / FUNCIÓN DE CÁLCULO DE IMPUESTO

- TAX+ ■ Add Tax Key** – Used for adding the tax amount to the displayed figure.
- Tecla de Sumar Impuesto** – Se utiliza esta tecla para sumar el importe del impuesto a la cifra que aparece en la pantalla.
- TAX- ■ Deduct Tax Key** – Used for deducting the tax amount from the displayed figure.
- Tecla de Restar Impuesto** – Se utiliza esta tecla para reducir el importe del impuesto de la cifra que aparece en la pantalla.

Calculation / Cálculo	Operation / Operación	Print Out / Imprimir
Set Tax Rate Rate: 5%	5 TAX+	0. % 5. %
Add the Tax Amount Price \$2,000 without tax Tax = ? (\$100) Selling Price with tax = ? (\$2,100)	2000 TAX+	2,000. 5. % 100.00 Δ+ 2,100.00 *
Deduct the Tax Amount Selling Price \$3,150 with tax Tax = ? (\$150) Price without Tax = ? (\$3,000)	3150 TAX-	3,150. 5. % 150.00 Δ- 3,000.00 *
Recall Tax Rate	TAX+	5. %

COST-SELL-MARGIN CALCULATION / CÁLCULO DE COSTES-VENTAS-MARGEN

- COST SELL MARGIN ■** Used for calculating the cost, selling price and profit margin amount. Enter the value of any 2 items to obtain the balance value item. (e.g. enter the value of the cost and the selling price to obtain the profit margin %.)
- Se utiliza para calcular el coste, el precio de venta y el porcentaje del margen. Introduzca el valor de dos de estas tres variables para obtener el resultado del balance cor respondiente. (Por ejemplo, introduzca el valor del coste y del precio de venta para obtener el margen de beneficio %).

Calculation / Cálculo	Operation / Operación	Print Out / Imprimir
Calculating Cost Selling Price : \$2,000 Profit Margin : 30% Cost = ?(\$1,400)	2000 30 =	2,000. Sx 30. M% 1,400.00 Cx
Calculating Selling Price Cost : \$1,500 Profit Margin : 20% Selling Price = ?(\$1,875)	1500 20 =	1,500. Cx 20. M% 1,875.00 Sx
Calculating Profit Margin Cost : \$1,500 Selling Price : \$2,000 Profit Margin = ?(25%)	1500 2000 =	1,500. Cx 2,000. Sx 25.00 M%

OVERFLOW / DERRAMAMIENTO DE CAPACIDAD

Calculation / Cálculo	Operation / Operación	Print Out / Imprimir
550000000000 x) 23 ----- 1265000000000 (Error)	550000000000 23 =	550,000,000,000. x 23. = ERR 12.65000000000 * 0. C
6 ÷ 0 = 0 (Error)	6 0 =	6. ÷ 0. = ERR 0. *

CANON CONSUMER CALCULATOR LIMITED WARRANTY

The limited warranty set forth below is given by Canon U.S.A., Inc., (Canon U.S.A.) with respect to Calculators purchased and used in the United States respectively.

This limited warranty is only effective upon presentation of proof of purchase (bill of sale) to Canon U.S.A. Factory Service Center. Canon Calculators, when delivered to you in a new condition in the original container, are warranted against defective materials or workmanship as follows: for a period of one (1) year from the date of original purchase, defective parts or Calculators returned to a Canon U.S.A. Factory Service Center and proven to be defective upon inspection, will be exchanged at Canon U.S.A.'s sole option, for new or comparable rebuilt parts or calculators (of the same or similar model). Warranty for replacement shall not extend the original warranty period of the defective calculator.

When returning Calculators under this limited warranty, you must pre-pay the shipping charges, if any, and enclose a complete explanation of the problem. Calculators covered by this limited warranty will be repaired at Canon U.S.A.'s sole option, and returned to you without charge by any Canon U.S.A. Service Center. This warranty does not cover rechargeable batteries that may be supplied with the Calculator, as to which batteries there shall be no warranty or replacement.

Information Technology Services Center will refer you to the nearest Factory Service Center. Repairs not under warranty will be at such cost as Canon U.S.A. may from time to time generally establish.

This limited warranty covers all defects encountered in normal use of the calculators, and does not apply in the following cases:

- Loss or damage to the Calculators due to abuse, mishandling, alteration, accident, electrical current fluctuations, failure to follow operating instructions, maintenance and environmental instructions prescribed in Canon U.S.A.'s instruction manual or service performed by other than a Canon U.S.A. Factory Service Center.
- Use of parts (other than those distributed by Canon U.S.A. which damage the Calculator or cause abnormally frequent service calls or service problems.
- If any Calculator has had its serial numbers or dating altered or removed.
- Loss or damage to the Calculator due to leaking batteries (other than rechargeable batteries supplied as original equipment with the Calculator by Canon U.S.A. or water damage).

NO IMPLIED WARRANTY (OR CONDITION)* INCLUDING ANY IMPLIED WARRANTY (OR CONDITION)* OF MERCHANTABILITY OR FITNESS FOR A PARTICULAR PURPOSE, APPLIES TO THE CALCULATORS AFTER THE APPLICABLE PERIOD OF EXPRESS WARRANTY STATED ABOVE, AND NO OTHER EXPRESS WARRANTY OR GUARANTY, EXCEPT AS MENTIONED ABOVE, GIVEN BY ANY PERSON, FIRM OR CORPORATION WITH RESPECT TO THE CALCULATORS SHALL BIND CANON U.S.A. (SOME STATES OR PROVINCES DO NOT ALLOW LIMITATIONS ON HOW LONG AN IMPLIED WARRANTY LASTS, SO THE ABOVE LIMITATION MAY NOT APPLY TO YOU.) NEITHER CANON U.S.A. SHALL BE LIABLE FOR LOSS OF REVENUE OR PROFITS, FAILURE TO REALIZE SAVINGS OR OTHER BENEFITS, OR FOR ANY OTHER SPECIAL, INCIDENTAL OR CONSEQUENTIAL DAMAGES CAUSED BY THE USE, MISUSE OR INABILITY TO USE THE CALCULATOR, REGARDLESS OF THE LEGAL THEORY ON WHICH THE CLAIM IS BASED, AND EVEN IF CANON U.S.A. HAS BEEN ADVISED OF THE POSSIBILITY OF SUCH DAMAGES, NOR SHALL RECOVERY OF ANY KIND AGAINST CANON U.S.A. BE GREATER IN AMOUNT THAN THE PURCHASE PRICE OF THE CALCULATOR SOLD BY CANON U.S.A. AND CAUSING THE ALLEGED DAMAGE. WITHOUT LIMITING THE FOREGOING, YOU ASSUME ALL RISK AND LIABILITY FOR LOSS, DAMAGE OR INJURY TO YOU AND YOUR PROPERTY AND TO OTHERS AND THEIR PROPERTY ARISING OUT OF USE, MISUSE OR INABILITY TO USE ANY CALCULATOR SOLD BY CANON U.S.A. OR CANON CANADA NOT CAUSED DIRECTLY BY THE NEGLIGENCE OF CANON U.S.A. OR CANON CANADA. (SOME STATES OR PROVINCES DO NOT ALLOW THE EXCLUSION OR LIMITATION OF INCIDENTAL OR CONSEQUENTIAL DAMAGES, SO THE ABOVE LIMITATION OR EXCLUSION MAY NOT APPLY TO YOU.) THIS LIMITED WARRANTY SHALL NOT EXTEND TO ANYONE OTHER THAN THE ORIGINAL PURCHASER OF ANY CALCULATOR OR THE PERSON FOR WHOM IT WAS PURCHASED AS A GIFT AND STATES YOUR EXCLUSIVE REMEDY.

This warranty gives you specific legal rights, and you may also have other rights which vary from state to state or province to province. One Canon Park, Melville, NY 11747

Canon Information Technology Services in the United States
For all general inquiries, operational assistance, accessory orders or for the location of the nearest service facility for this product in the United States, please contact:

Canon U.S.A., Inc.
One Canon Park, Melville, NY 11747
Customer Relations Division
1-800-828-4040

Please keep a copy of your original bill of sale. In order to obtain warranty service, you will need to present a copy of your original bill of sale from your Consumer Calculator retailer at the time of service.

Also please keep all packing materials and the original packing box to protect your equipment, should you need to transport it for service.

FCC REGULATIONS

This device complies with Part 15 of the FCC Rules. Operation is subject to the following two conditions:
1) this device may not cause harmful interference, and
2) this device must accept any interference received, including interference that may cause undesired operation.
NOTE: This equipment has been tested and found to comply with the limits for a Class B digital device, pursuant to Part 15 of the FCC Rules. These limits are designed to provide reasonable protection against harmful interference in a residential installation. This equipment generates, uses and can radiate radio frequency energy and, if not installed and used in accordance with the instructions, may cause harmful interference to radio communications.
However, there is no guarantee that interference will not occur in a particular installation. If this equipment does cause harmful interference to radio or television reception, which can be determined by turning the equipment off and on, the user is encouraged to try to correct the interference by one or more of the following measures:
• Reorient or relocate the receiving antenna.
• Increase the separation between the equipment and receiver.
• Connect the equipment into an outlet on a circuit different from that to which the receiver is connected.
• Consult the dealer or an experienced radio/TV technician for help.
Do not make any changes or modifications to the equipment unless otherwise specified in the manual. If such changes or modifications should be made, you could be required to stop operation of the equipment.
Canon U.S.A., Inc.,
One Canon Plaza, Lake Success, New York, NY 11042, USA
Phone : (516) 328-5000

Interference-Causing Equipment Regulations
This digital apparatus does not exceed the Class B limits for radio noise emissions from digital apparatus as set out in the interference-causing equipment standard entitled "Digital Apparatus", ICES-003 of the Industry Canada."

BATTERY CAUTION

- Remove and immediately recycle or dispose of used batteries according to local regulations and keep away from children. Do NOT dispose of batteries in household trash or incinerate.
- Even used batteries may cause severe injury or death.
- Call a local poison control center for treatment information.
- Non-rechargeable batteries are not to be recharged.
- Do not force discharge, recharge, disassemble, heat above (40°C) or incinerate. Doing so may result in injury due to venting, leakage or explosion resulting in chemical burns.
- Ensure the batteries are installed correctly according to polarity (+ and -).
- Do not mix old and new batteries, different brands or types of batteries, such as alkaline, carbon-zinc, or rechargeable batteries.
- Remove and immediately recycle or dispose of batteries from equipment not used for an extended period of time according to local regulations.
- Always completely secure the battery compartment. If the battery compartment does not close securely, stop using the product, remove the batteries, and keep them away from children.

CANON ELECTRONIC BUSINESS MACHINES (H.K.) CO., LTD.

17/F., Tower One, Ever Gain Plaza, 82-100 Container Port Road, Kwai Chung, New Territories, Hong Kong

CANON U.S.A., INC.

One Canon Park, Melville, NY 11747, 1-800-OK-CANON

CANON CANADA INC.

8000 Mississauga Road, Brampton, Ontario L6Y 5Z7 Canada

CANON LATIN AMERICA, INC.

One Canon Park, Melville, NY 11747, U.S.A.