

Calculation Example / 計算範例 / Kalkulasi Contoh

CALCULATION	OPERATION	DISPLAY
▼ Mixed		123456789012
140-35+22=127	140 \ominus 35 $+$ 22 $=$	(127.00)
2x2 3=6	2 \times 2 \times 3 $=$	(6.00)
-7x9 9 =-63	7 \times 9 \times 9 $=$	(-63.00)
(2+4)+3x8.1=16.2	2 $+$ 4 $+$ 3 \times 8.1 $=$	(16.20)
▼ Constant		
2+3=5	2 $+$ 3 $=$	(5.00)
4+3=7	4 $+$ 3 $=$	(7.00)
1-2=-1	1 \ominus 2 $=$	(-1.00)
2-2=0	2 \ominus 2 $=$	(0.00)
2x3=6	2 \times 3 $=$	(6.00)
2x4=8	4 \times 2 $=$	(8.00)
6+3=2	6 \div 3 $=$	(2.00)
9+3=3	9 \div 3 $=$	(3.00)
▼ Power, Fraction		
3 ⁴ =81	3 \times^y 3 $=$	(81.00)
1/5=0.2	5 \div^f 1 $=$	(0.20)
1/(2x3+4)=0.1	2 \times 3 $+$ 4 \div 1 $=$	(0.10)
▼ Square Root		
$\sqrt{3}$ = 1.73205080756	3 $\sqrt{\square}$	(1.73205080756)
▼ Add Mode		
\$14.90+\$0.35-\$1.45 =13.80	1490 $+$ 35 \ominus 145 $=$	(13.80)

CALCULATION	OPERATION	DISPLAY
▼ Floating Calculation		123456789012
8÷3x3.7+9 =18.8666666666	8 \div 3 \times 3.7 $+$ 9 $=$	(18.8666666666)
▼ Reciprocal Calculation		
1/7=0.14285714285	7 \div^r 1 $=$	(0.1429)
▼ Round-off		
11÷3=3.6666666666	11 \div 3 $=$	(3.6667)
▼ Round-down		
11÷3=3.6666666666	11 \div 3 $=$	(3.6666)
▼ Percentage		
1200x $\frac{12}{100}$ =144	1200 \times 12 $\%$	(144.00)
1200x $\frac{15}{100}$ =180	15 $\%$	(180.00)
1200+(1200x20%)=1,440	1200 $+$ 20 $\%$	(1'440.00)
1200-(1200x20%)=960	1200 \ominus 20 $\%$	(960.00)
▼ Memory		
3x4= 12	3 \times 4 $M\pm$	(M 12.00)
-) 6÷0.2= 30	6 \div 0.2 $M\pm$	(M 30.00)
-18	$M\pm$	(M -18.00)
+) 200	200 $M\pm$	(M 200.00)
182	$M\pm$ (Recall Memory)	(M 182.00)
	$M\pm$ (Clear Memory)	(182.00)
▼ Grand total		
30x40=1,200	30 \times 40 $=$	(GT 1'200.00)
50x60=3,000	50 \times 60 $=$	(GT 3'000.00)
+) 25x30= 750	25 \times 30 $=$	(GT 750.00)
4,950	GT	(GT 4'950.00)
+) 235x35=8,225	235 \times 35 $=$	(GT 8'225.00)
13,175	GT (Grand Total)	(GT 13'175.00)
	GT (Clear Grand Total)	(13'175.00)

CALCULATION	OPERATION	DISPLAY
▼ Tax Calculation		123456789012
Tax Rate Set		
Tax Rate = 5%	5 SET TAX	(TAX% 5.)
Add the Tax Amount		
Price \$2,000 without tax	2000	(2'000.)
Selling price with tax?	TAX+	(TAX+ 2'100.00)
(\$2,100)	TAX+	(TAX 100.00)
Tax = (\$100)		
Deduct Tax Amount		
Selling price \$3,150 with tax	3150	(3'150.)
Price without tax? (\$3,000)	TAX-	(TAX- 3'000.00)
Tax amount? = (\$150)	TAX-	(TAX 150.00)
Recall Tax Rate	RECALL TAX	(TAX% 5.)
▼ Overflow		
1) 123456789x78900 =9740740652100 (Error)	123456789 \times 78900 $=$	(E 9.74074065210)
2) 99999999999 (Add to Memory) 123 (Add to Memory)	99999999999 $M\pm$ 123 $M\pm$	(M 999'999'999'999.) (M 1.00000000012) (M 1.00000000012)
3) 6÷0=0 (Error)	6 \div 0 $=$	(E 0.) (0.)

BATTERY

Battery: 1 Lithium battery (Type: CR2032)

Replace battery

After replace the battery, press the [RESET] button.
After resetting be sure to set the tax rate again.

CAUTION: Risk of explosion if battery is replaced by an incorrect type dispose of used batteries according to the instruction.

電池

電池：1 顆鋰性電池 (型號：CR2032)

更換電池

更換電池後，請按下 [RESET] 按鈕。
重新設定後，請務必再次設定稅率。

注意： 如果更換為不正確類型的電池，可能會有爆炸危險。請依指示棄置用過的電池。

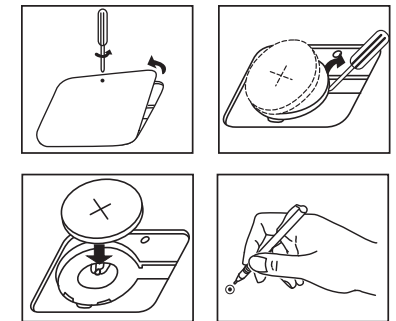
BATERE

Batere: 1 batere Litium (Tipe: CR2032)

Mengganti batere

Setelah batere diganti, tekan tombol [RESET].
Setelah direset, tetapkan kembali nilai pajak.

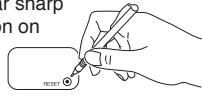
Awas: Risiko terjadi ledakan jika batere diganti dengan jenis yang berbeda. Buanglah batere bekas sesuai dengan petunjuk.



POWER SUPPLY

This calculator comes with a dual power source solar cell and lithium battery. The duration of a lithium battery depends entirely on individual usage.

- Electromagnetic interference or electrostatic discharge may cause the display to malfunction or the contents of the memory to be lost or altered. Should this occur, use the tip of a ball point pen (or similar sharp object) to press the [RESET] button on the back of the calculator. After resetting, be sure to set the tax rate again.

**DECIMAL POINT SELECTOR SWITCH**

- Used for designating the decimal point position (+ 4 3 2 1 0 F) for calculated results.
- + (Add-mode)** – Addition and subtraction functions are performed with an automatic 2-digit decimal. It is convenient for currency calculations.
- F (Floating Decimal Point)** – All effective numbers up to 12 digits are displayed.

ROUNDING SWITCH

- Used for round-off [5/4], or round-down [↓] to the pre-selected decimal digits in the result.

GRAND TOTAL FUNCTION

- The totals are accumulated in the grand total memory. Press [GT] to get the grand total. Press [GT] successively to clear the grand total memory.

TAX CALCULATION

- Store the Tax Rate** – Press [CA] [SET TAX+] and enter the tax rate figure, then press [SET TAX+] to store.
- Recall the Tax Rate** – Press [CA] [RECALL TAX+] to recall the current tax rate.
- Add Tax Key** – Used for adding the tax amount to the displayed figure.
- Deduct Tax Key** – Used for deducting the tax amount from the displayed figure.

OVERFLOW FUNCTION

In the following cases, when "E" is displayed, the keyboard is electronically locked, and further operation is impossible.

Press [C] to clear the overflow.

The overflow function occurs when:

- The result or the memory content exceeds 12 digits to the left of the decimal point.
- Dividing by "0".

SPECIFICATION

Power Source: Solar cell and Lithium battery (CR2032 x 1)

Automatic power-off: approx. 7 minutes

Usable Temperature: 0°C to 40°C (32°F to 104°F)

Dimensions:

- TS-1200TG: 188mm (L) x 133mm (W) x 29mm (H)
7-13/32" (L) x 5-15/64" (W) x 1-9/64" (H)
- HS-20TG: 164mm (L) x 105mm (W) x 33mm (H)
6-29/64" (L) x 4-9/64" (W) x 1-19/64" (H)

Weight: TS-1200TG: 241g (8.5 oz)
HS-20TG: 152g (5.36 oz)

(Subject to change without notice)

電源供應器

此計算機採用雙電源。鋰電池的使用時間完全一個人的使用情況而定。

- 電磁干擾或靜電釋放可能會造成顯示幕故障，或記憶體中的內容遺失或修改。如果發生這種情況，請使用鋼筆的筆尖（或細小的尖銳物體）壓入計算機背面的重設 [RESET] 按鈕。重設之後，請務必再次設定稅率。

**小數點選擇器開關**

- 用於指定計算結果的小數點位置 (+ 4 3 2 1 0 F)。
- + (加法模式)** – 加法與減法功能會自動採用 2 位數小數點。這是為了方便貨幣計算。
- F (浮點小數點)** – 可列印或顯示最多到 12 位數字的所有數字。

四捨五入切換

- 在計算結果中使用預先選擇的小數點數位來進行五入 [5/4]，或小數點刪除 [↓]。

加總功能

- 加總記憶體中將累計總金額。按下 [GT] 以取得總計。連續按下 [GT] 以清除總計記憶體。

稅率計算

- 儲存稅率** – 按下 [CA] [SET TAX+] 並輸入稅率數字，然後按下 [SET TAX+] 以儲存。
- 呼叫稅率** – 按下 [CA] [RECALL TAX+] 以呼叫目前稅率。
- 新增稅率按鍵** – 用於在顯示的數字中加入稅額。
- 扣除稅率按鍵** – 用於在顯示的數字中扣除稅額。

溢滿功能

在以下情況下，當顯示 "E" 時，將以電子方式鎖定鍵盤，且無法再進行任何操作。按下 [C] 以清除溢滿。

當出現以下情形時，就會發生溢滿：

- 計算結果或記憶內容的小數點左方數字超過 12 位數。
- 除以 "0"。

規格

電力來源：太陽電池與鋰電池 (CR2032 x 1)

自動關機：大約 7 分鐘

操作溫度：0°C 至 40°C (32°F 至 104°F)

尺寸：

- TS-1200TG: 188mm (長) x 133mm (寬) x 29mm (高)
7-13/32" (長) x 5-15/64" (寬) x 1-9/64" (高)
- HS-20TG: 164mm (長) x 105mm (寬) x 33mm (高)
6-29/64" (長) x 4-9/64" (寬) x 1-19/64" (高)

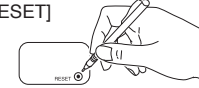
重量：TS-1200TG: 241 公克 (8.5 盎司)
HS-20TG: 152 公克 (5.36 盎司)

(如有變更，恕不另行通知)

CATU DAYA

Catu daya kalkulator ini berasal dari dua sumber tenaga. Umur batere Litium sangat tergantung pada pemakaian.

- Gangguan elektromagnetik atau pelepasan muatan elektrostatik dapat merusak tampilan atau menyebabkan isi memori hilang atau berubah. Apabila hal ini terjadi, gunakan ujung bolpoin (atau benda tajam serupa) untuk menekan tombol [RESET] di bagian belakang kalkulator. Setelah direset, pastikan untuk mereset nilai pajak.

**SAKLAR PEMILIH TITIK DESIMAL**

- Digunakan untuk mengatur posisi titik desimal (+ 4 3 2 1 0 F) untuk hasil kalkulasi.
- + (Mode-Menjumlahkan)** – Fungsi penjumlahan dan pengurangan dilakukan sampai dengan 2-digit desimal otomatis. Fungsi ini mudah dilakukan untuk kalkulasi mata uang.
- F (Titik Desimal Floating)** – Semua angka tercetak atau ditampilkan sampai dengan 12 digit angka.

SAKLAR PEMBULATAN

- Digunakan untuk pembulatan [5/4], atau pembulatan ke bawah [↓] terhadap digit desimal yang telah dipilih sebelumnya pada hasil.

FUNGSI GRAND TOTAL

- Akumulasi jumlah total disimpan di dalam memori grand total. Tekan [GT] untuk mendapatkan jumlah total. Tekan [GT] secara berurutan menghapus memori grand total.

KALKULASI PAJAK

- Menyimpan Nilai Pajak** – Tekan [CA] [SET TAX+] dan masukkan angka nilai pajak, selanjutnya tekan [SET TAX+] untuk menyimpan.
- Memanggil Kembali Nilai Pajak** – Tekan [CA] [RECALL TAX+] untuk memanggil kembali nilai pajak saat ini.
- Tombol Menambahkan Pajak** – Digunakan untuk menambahkan jumlah pajak pada angka yang ditampilkan.
- Tombol Memotong Pajak** – Digunakan untuk memotong jumlah pajak dari angka yang ditampilkan.

FUNGSI OVERFLOW

Di dalam kasus berikut, apabila muncul tampilan "E", papan tombol yang terkunci secara elektronik, dan operasi lebih lanjut adalah mustahil. Tekan [C] untuk menghapus overflow. Fungsi overflow terjadi manakala:

- Hasil isi memori lebih dari 12 digit ke kiri titik desimal.
- Dibagi dengan "0".

SPESIFIKASI

Sumber Daya: Sel matahari dan batere Litium (CR2032 x 1)

Catu Daya Mati Otomatis: lebih kurang 7 menit

Suhu Operasi: 0°C sampai 40°C (32°F sampai 104°F)

Dimensi:

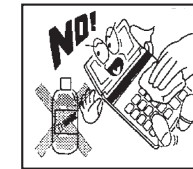
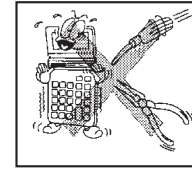
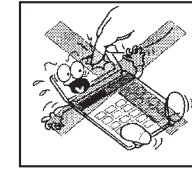
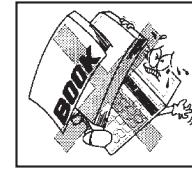
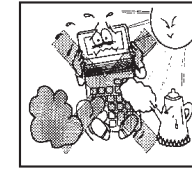
- TS-1200TG: 188mm (L) x 133mm (P) x 29mm (T)
7-13/32" (L) x 5-15/64" (P) x 1-9/64" (T)
- HS-20TG: 164mm (L) x 105mm (P) x 33mm (T)
6-29/64" (L) x 4-9/64" (P) x 1-19/64" (T)

Berat: TS-1200TG: 241g (8.5 oz)
HS-20TG: 152g (5.36 oz)

(Dapat berubah tanpa pemberitahuan)

Taking Care Of Your Calculator /

請愛護您的計算機 /

Merawat Kalkulator Anda

CANON ELECTRONIC BUSINESS MACHINES (H.K.) CO., LTD.
17/F., Ever Gain Plaza, Tower One, 82-100 Container Port Road,
Kwai Chung, New Territories, Hong Kong

ABILITY SHI-PRO CO., LTD.

No. 10, Alley 6, Lane 141, Fu-Shing North Road Taipei, Taiwan,
105 R.O.C.

DAI PHONG TRADING CO., LTD.

A25 Cao Thang Prolong St., Ward 12, Dist. 10 HCMC, Vietnam
Tel : 848-8622449 ~ 451 Fax : 848-2650603

E-mail : nguyenv.thanh.tam@abico.com.vn

Website : http://www.abico.com.vn

SOLID BUSINESS MACHINES CENTER INC.

Suite 303, Singson Building Plaza Moraga, Binonda, Manila,
Philippines

WELLTECH GROUP CO., LTD.

13/27, 15/28, Moo 9 Kaset-Naramintra Road, Klongkum, Bungkum,
Bangkok 10230, Thailand

CANON MARKETING (MALAYSIA) SDN BHD.

Block D, Peremba Square, Saujana Resort, Section U2,
40150 Shan Alam, Selangor Darul Ehsan, Malaysia

CANON KOREA BUSINESS SOLUTIONS INC.

#168-12, Samsong-dong, Gangnam-gu, Seoul, Korea

CANON AUSTRALIA PTY, LTD.

1 Thomas Holt Drive, North Ryde, Sydney, N.S.W. 2113, Australia