



使用须知 中文

· 使用鼠标计算器前，请阅读以下安全措施。请妥善保存安全措施及操作说明书，以备日后参考。

故障及妥善处理

- 如鼠标计算器开始冒烟、发出异味或发热时，切勿继续使用，否则可能导致失火或触电。
- 切勿使用湿布或油漆稀释剂等挥发性液体清洁鼠标计算器，而仅可使用干燥软布进行清洁。
- 切勿以焚化等不当方式处置鼠标计算器，以免造成人身伤害或损害。建议您按照本国法律处置产品。

电池警告！

- 电池须置于儿童无法触及之处。
- 切勿将电池暴露于高温或直接热源下，亦勿对其作焚化处理。
- 切勿将新旧电池或不同型号的电池混用。
- 切勿让金属物件接触设备上的电池端子，否则会导致变烫及燃烧。
- 如电池耗尽或放置时间过长，请将其取出。
- 及时取出电量不足或用尽的电池，并按照当地及本国法律法规进行回收或处置。
- 如电池发生电解液外泄，则取出所有电池，注意勿使外泄液体接触到您的皮肤或衣物。如电解液接触到皮肤或衣物，应立即用清水冲洗。

辐射产品规格

设备  
本设备符合国际标准  
IEC 60825-1 :2007对1类辐射产品的规定。



规格

- 辐射输出功率：2.31微瓦
- 辐射发射波长：介于832 - 865纳米

辐射产品警告！

- 本设备为1类辐射产品，在IEC 60825-1：2007中列明的可合理预见条件下可安全使用。
- 避免可能受到的辐射辐射及辐射光线直接照射眼睛。
- 切勿凝视辐射光束。
- 切勿将辐射光束射入人眼，长期接触辐射光会损伤眼睛。
- 切勿用辐射笔指向任何人。辐射笔仅可照射无生命的物体。
- 切勿让儿童在无人照看下使用本辐射产品。
- 切勿在类似镜面（反射性）的表面上使用本产品，否则光束可能发生反射，如直射光一般射入眼睛。

系统要求

硬件: 带蓝牙(V2.0)功能的电脑（附带内建式蓝牙连接装置或外部蓝牙配置器）  
预装Windows x86 / x64或以上的PC，采用Intel处理器的Mac系统  
作业系统: Windows® XP (sp 2.0 或以上) 或 Windows Vista® 或 Windows® 7;  
Mac OS® X 10.4 ~ 10.6

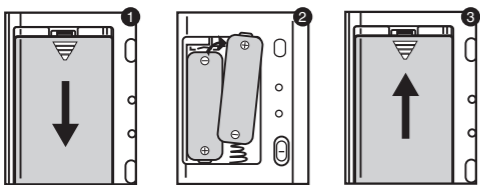
蓝牙连接

**选择您的作业系统**  
X Mark I 鼠标计算器可用于Windows及Macintosh作业系统。请您将X Mark I 鼠标计算器底部的蓝牙作业系统切换键滑动至PC或Mac模式以进行选择。  
**须知：**在将您的鼠标计算器连接至装有蓝牙的电脑时，如蓝牙作业系统切换键设置为错误的作业系统，则可能出现异常情况。

▲ 将鼠标计算器与您电脑上的蓝牙装置相连接之前，确保您电脑上的蓝牙功能启用且就绪。  
频率：2.4 GHz 频率范围  
连接范围：作业范围高达10米（32.8英尺）  
注意：连接范围受若干因素的影响，如附近的金属物件及鼠标与接收机的相对位置。

安装电池

1. 按箭头方向滑动电池盖，将其从鼠标计算器的背面卸下。
2. 安装新的AA碱性电池，确保每节电池的正极(+)与负极(-)符合电池盒内部的极性指示。
3. 将电池盖装回电池盒上。



警告：如替换错误类型的电池可能会引发爆炸。按照指示处置废旧电池。

IMPORTANT PRECAUTIONS BEFORE USE

ENGLISH

· Please read the following safety precautions before using the mouse calculator. Keep these safety precautions and operating instructions on hand for future reference.

MALFUNCTION AND HANDLING WITH CARE

- Never continue to use the mouse calculator if it starts to smoke, emits a strange odor, or emits heat. Continued Using of the calculator under such conditions creates the danger of fire and electric shock.
- When cleaning the mouse calculator do not use a damp cloth or volatile liquid such as paint thinner. Instead, use only a soft, dry cloth.
- Never dispose the mouse calculator improperly such as burning; it can create risks of personal injury or harm. You are suggested to dispose this product according to your national law.

BATTERY CAUTION !

- Keep the batteries out of reach of children.
- Never expose the batteries to high temperatures, direct heat, or dispose by incineration.
- Do not mix new and old batteries or batteries of different types.
- Do not allow metal objects to touch the battery terminals on the device; they can become hot and cause burns.
- Remove the batteries if they are worn out or have been storing for an extended period of time.
- Always remove old weak, or worn out batteries promptly and recycle or dispose of them in accordance with local and national disposal regulations.
- If a battery leaks, remove all batteries, taking care to keep the leaked fluid from touching your skin or clothes. If fluid from the battery comes into contact with skin or clothes, flush skin with water immediately.

LASER SPECIFICATIONS

DEVICE  
This device complies with International Standard IEC 60825-1 : 2007 for a Class 1 laser product.



SPECIFICATIONS

- Laser power output: 2.31 microwatts
- Emitted laser wavelength: range 832 - 865 nanometers

LASER PRODUCT CAUTION !

- This device is a Class 1 laser that is safe under reasonably foreseeable conditions as described by IEC 60825-1 : 2007.
- It is recommended to avoid possible exposure to laser radiation and direct the laser beam at eyes.
- Do not stare into laser beam.
- Do not point into a person's eyes and prolonged exposure can be hazardous to the eyes.
- Do not shine a laser pointer at anyone. Laser pointers are designed to illuminate inanimate objects.
- Do not allow children to use the laser product unsupervised.
- Do not use on a mirror-like (reflective) surface which may reflect and act like a direct beam to the eye.

SYSTEM REQUIREMENTS

Hardware : Bluetooth-enabled (V2.0) computer (with either built-in Bluetooth connection device or external Bluetooth dongle)  
Windows based PC x86 / x64 or above, Intel-based Mac system  
Operating System : Windows® XP (sp 2.0 or above) or Windows Vista® or Windows® 7;  
Mac OS® X 10.4 ~ 10.6

BLUETOOTH CONNECTION

Selecting Your Operating System

The X Mark I Mouse calculator is designed to work with both Windows and Macintosh OS's. Please select your OS switch which is located at the bottom of the X Mark I Mouse calculator by sliding the Bluetooth OS switch to PC or Mac mode.

**Important :** During the process of connecting your mouse calculator to your Bluetooth computer, be sure the Bluetooth OS switch location is correct. If the Bluetooth OS switch set to an incorrect OS, there may be abnormal situation.

▲ Before connecting the mouse calculator with the Bluetooth device in your computer, be sure the Bluetooth feature in your computer is enable and ready.

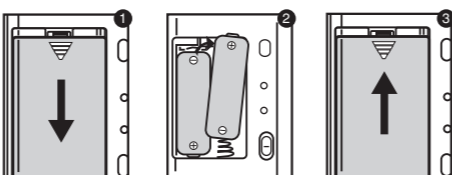
Frequency : 2.4 GHz frequency range

Connection Range : The operation range is up to 10 meters (32.8 feet)

**NOTE :** Connect range is affected by many factors, such as nearby metallic objects and relative positioning of the mouse and receiver.

INSTALLING THE BATTERIES

1. Remove the battery cover from the back of the mouse calculator by sliding in the direction of the arrow.
2. Install the new AA alkaline batteries, making sure that the positive (+) and negative (-) ends of each battery match the polarity indicators inside the battery compartment.
3. Place the battery cover back to the battery compartment.



**CAUTION:** Risk of explosion if battery is replaced by an incorrect type. Dispose of used battery according to the instruction.

初始设定指南 / INITIAL SETUP INSTRUCTIONS

Macintosh

1. **CN** 找到蓝牙图示并按一下进行设定；  
选取「Turn Bluetooth On」以启动蓝牙。

**E** Go to the Bluetooth icon and click to set up; select "Turn Bluetooth On" to activate the Bluetooth.



2. **CN** 在滚动清单中选取「Set up Bluetooth Device...」。

**E** Select "Set up Bluetooth Device..." in the scrolled list.



3. **CN** 蓝牙安装助理；按一下「Continue」进行启动，并遵从萤幕提示。

**E** Bluetooth Setup Assistant; click "Continue" to start and follow the screen.



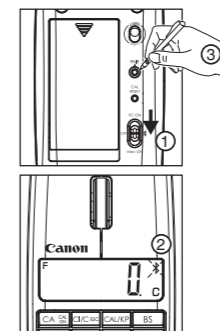
4. **CN** 选取「Mouse」并按一下「Continue」；

**E** Select "Mouse" and click "Continue";



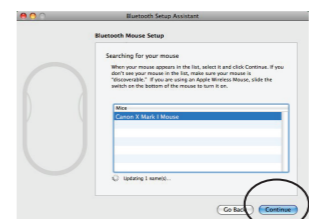
5. **CN** 滑动至开启蓝牙 Mac ON (位于鼠标计算器背面的切换键)；「\*」图示出现于显示屏上，并闪烁显示 (2)。按下「Pair button」(3) 以连接蓝牙。

**E** Slide to Bluetooth Mac ON (the switch located on the back of the Mouse calculator), the "\*" icon appear on the display and flash (2). Press "Pair button" (3) to connect the Bluetooth.



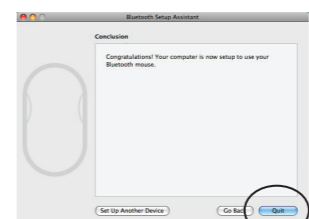
6. **CN** 选取「Canon X Mark I Mouse」并按一下「Continue」。

**E** Select "Canon X Mark I Mouse" and click "Continue".



7. **CN** 现时您的电脑已设好，可使用鼠标计算器了。

**E** Your computer is now setup to use your Mouse calculator.



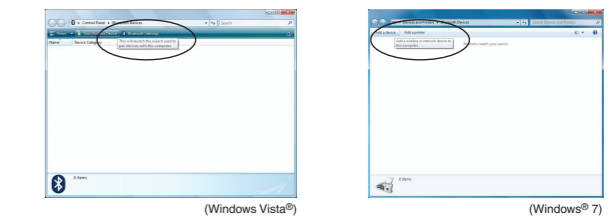
8. **CN** 欲自订您的 X Mark I 鼠标 — 您可为每个按钮设定或指派一项执行功能，将左侧或右侧按钮作为主要按钮，并调整追踪、卷动及按的速度。  
**Macintosh :** Apple > 系统偏好 > 键盘及鼠标 > 鼠标

**E** To Customize your X Mark I mouse - You can set up or assign an action to each button, left or right button as the primary button and adjust the speed for tracking, scrolling and clicking.  
**Macintosh:** Apple > System Preferences > Keyboard & Mouse > Mouse

Windows Vista® and Windows® 7

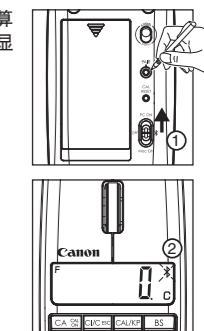
1. **CN** 按一下您桌面上或系统工具列中的蓝牙图示，选取「Add Wireless Device」以启动蓝牙。

**E** Click the Bluetooth icon located on your desktop or in the system Toolbar, select "Add Wireless Device" to activate the Bluetooth.

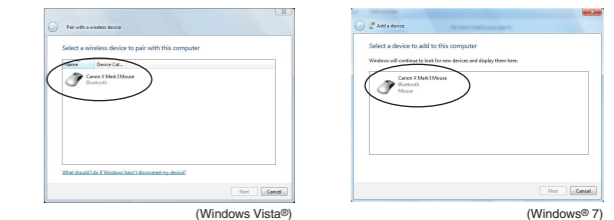


2. **CN** 滑动至开启蓝牙 PC ON (位于鼠标计算器背面的切换键)；「\*」图示出现于计算器显示屏上，并闪烁显示 (2)。按下「Pair button」(3) 以连接蓝牙。

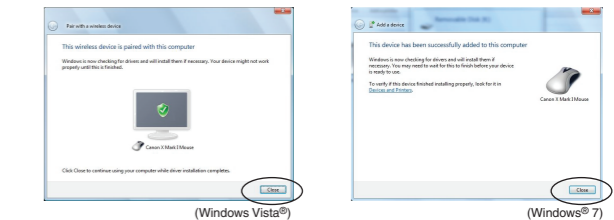
**E** Slide to Bluetooth PC ON (the switch located on the back of the mouse calculator), the "\*" icon appear on the calculator display and flash (2). Press "Pair button" (3) to connect the Bluetooth.



3. **CN** 将发现「Canon X MARK I Mouse」并将其列于萤幕上。按一下装置的名称。  
**E** The "Canon X MARK I Mouse" will be discovered and listed on the screen. Click the name of the device.

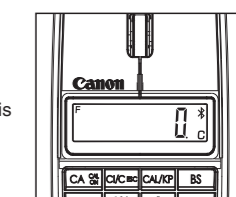


4. **CN** 按一下「Close」，完成连接。  
**E** Click "Close" to complete the connection.



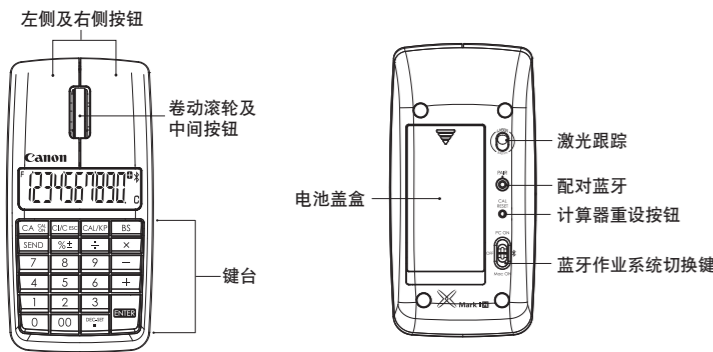
5. **CN** 现时您的电脑已设好，可使用佳能 X Mark I 鼠标计算器了。「Bluetooth」图示将出现于显示屏上。

**E** Your computer is now setup to use this Canon X Mark I Mouse calculator. The "Bluetooth" icon will appear on the display.



6. **CN** 欲自订您的 X Mark I 鼠标 — 您可为每个按钮设定或指派一项执行功能，将左侧或右侧按钮作为主要按钮，并调整追踪、卷动及按的速度。  
**Windows:** 开始 > 控制台 > 鼠标

**E** To Customize your X Mark I mouse - You can set up or assign an action to each button, left or right button as the primary button and adjust the speed for tracking, scrolling and clicking.  
**Windows:** Start > Control Panel > Mouse

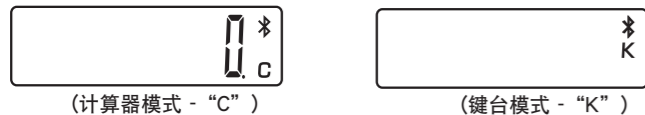


## 计算器模式及键台模式

连接蓝牙时，该鼠标计算器具备2种模式 — 计算器模式(CAL)及键台模式(KP)。

### 在计算器模式与键台模式之间切换

■ 欲在计算器模式与键台模式之间切换，仅需按下 **[CAL/KP]** 键。显示屏上将显示模式状态。



### 计算器模式（连接蓝牙时）

- 计算器执行标准10位数计算操作。
- 您可透过按下 **[SEND]** 键向电脑发送计算结果（或显示内容）。
  - 当鼠标计算器显示屏上显示E（错误）指示时，您不得执行发送操作。
  - 当计算器未与电脑中的蓝牙连接时，**[SEND]** 键则停用。

### 键台模式（连接蓝牙时）

■ 您可直接在电脑中输入数字（0~9），+，-，x，÷，**[BS]**，**[ ]**，**[ESC]**，**[ENTER]**。

### 省电

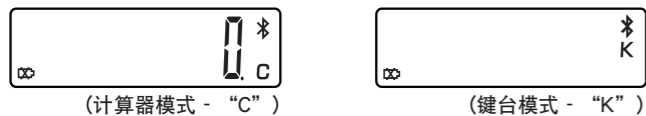
■ X Mark I 鼠标具备省电功能，即X Mark I 鼠标闲置约30分钟后将进入「Idle Mode」，同时显示屏关闭。连接蓝牙后，按一下鼠标按钮以重新启动蓝牙连接及鼠标操作。

■ 当鼠标计算器处于「Idle Mode」及静止（无操作）状态超过7分钟，将自动关闭电源。按一下鼠标按钮或按下 **[CA ON]** 键（仅计算器模式）以重新启动鼠标计算器及蓝牙连接。

注意: 透过按一下鼠标重新启动后，您无需重新连接蓝牙。

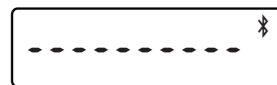
### 电源不足指示

■ 当显示屏变暗或显示「**[ ]**」图示时。请在方便时，尽早更换电池以避免电源意外耗尽。



### 键台锁定（连接蓝牙时）

■ 按住 **[CA ON]** 键保持3秒钟；键台将被锁定并显示。



您仍可使用鼠标操作

■ 欲解除键台锁定，按住 **[CA ON]** 键保持3秒钟。

## 按键索引

- [CA ON]** : 清除所有显示  
接通计算器电源  
键台锁定/解锁
- [CI/C ESC]** : 清除刚刚输入的内容（仅计算器模式）  
清除所有已输入的内容（仅计算器模式）  
退出输入（仅键台模式）
- [CAL/KP]** : 在计算器模式与键台模式之间切换
- [BS]** : 在键台模式中执行退格；更改所显示数值的每位数字及清除末位有效数字。
- [SEND]** : 向电脑发送计算结果或显示内容（在计算器模式下，并连接蓝牙）
- [%±]** : 用于执行百分率相加及折扣计算。（仅计算器模式）
- [ENTER]** : 执行计算（仅计算器模式）  
Enter键 — 确认输入内容（仅键台模式）
- [DEC-SET]** : 指定位置为小数点后的F（浮动小数点）0、2或3位数。  
用于设定在计算的小数点后的位数。  
按下 **[CA ON]** 键,且按住 **[DEC-SET]** 键不放,显示屏将按照 F → 0 → 2 → 3 → F 的顺序变化。（仅计算器模式）

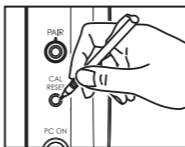
## 规格

- 电源：AA大小的硷性电池x2
- 无线连接：蓝牙2.0
- 可用温度：0°C至40°C（30°F至104°F）
- 尺寸：120mm（长）x 60mm（宽）x 30mm（高）
- 重量：88g（不包括电池）/ 136g（包括电池）  
（规格如有改动，恕不另行通知）

## 故障排除

鼠标计算器未正确连接 / 未能正常运作。

1. 检查电池放置方向。
2. 确保电脑符合规定的系统要求。
3. 检查蓝牙硬件及软体是否安装正确及启用。
4. 移除个人电脑与鼠标计算器之间的障碍物。
5. 如鼠标计算器此前刚被另一台个人电脑使用，请再次进行配对。
6. 如显示 **[ ]** 图示，则更换新电池。
7. 尝试关闭及开启鼠标，然后等待3秒。再次启动程序。
8. 蓝牙开启后无显示，按下 **[CA ON]** 键并检查 **[ ]** 图示是否显示。
9. 确保蓝牙USB介面卡（适配器）正常运作。
10. Mac系统中的闲置模式触发失去连接警告讯息。请忽略讯息并按一下鼠标以继续。该警告讯息是Mac作业系统的标准功能，不会影响您的蓝牙连接。
11. 电磁干扰或静电放电可能引起显示屏失常。如发生该种情况，可用圆珠笔尖（或类似尖锐物件）按下鼠标计算器背面的 **[CAL RESET]** 按钮。

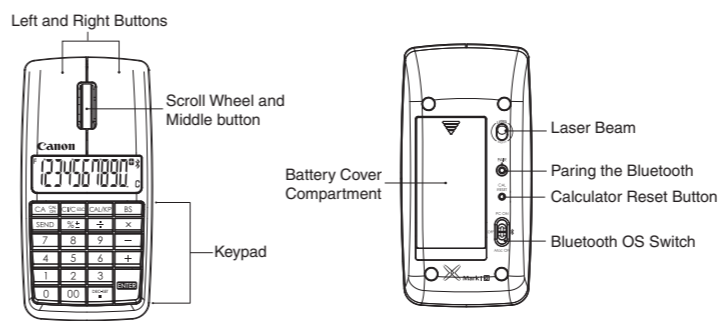


## 提示

- \* 建议您在平滑的表面上使用镭射鼠标。
- \* 对于旅行中的使用者而言，X Mark I 鼠标计算器在底部提供一个滑动切换键。不使用鼠标时，滑向「OFF」位置以关闭蓝牙电源。
- \* 指示萤幕或设定会因PC或蓝牙装置驱动程序版本不同而有所不同。
- \* 如您的PC未具备内置式蓝牙装置，则需购买蓝牙USB介面卡（适配器）并依照其指示。
- \* 当您使用其他的个人电脑时，请参照初始设定并再次进行「Pairing」。

## INSTRUCTION OF MOUSE

## ENGLISH

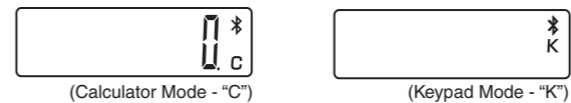


## CALCULATOR MODE AND KEYPAD MODE

When Bluetooth connected, this mouse calculator has 2 modes -- Calculator Mode (CAL) and Keypad Mode (KP).

### Switch between Calculator and Keypad Mode

■ To switch between calculator and keypad mode, simply press the **[CAL/KP]** key. The mode status will be shown on the display.



### Calculator Mode (when Bluetooth connected)

- The calculator performs normal 10 digits calculator operations.
- You can send calculation results (or display contents) to a computer by pressing **[SEND]** key.
  - You cannot perform a send operation while the E (Error) indicators is shown on the mouse calculator display.
  - The **[SEND]** key is disable when the calculator is not Bluetooth connected with a computer.

### Keypad Mode (when Bluetooth connected)

■ You can input the numeric number (0 ~ 9), +, -, x, ÷, **[BS]**, **[ ]**, **[ESC]**, **[ENTER]** to a computer directly.

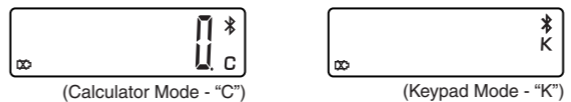
### Power-Saving

- The X Mark I Mouse calculator has a power-saving feature that X Mark I Mouse calculator will go into "Idle Mode" with the display shutting off after approximately 30 minutes of inactivity. After Bluetooth disconnected, click the mouse button to re-activate the Bluetooth connection and mouse operation.
- In the "Idle Mode" and still (none of operation) more than 7 minutes, the mouse calculator will automatically power off. Click the mouse button or press **[CA ON]** key (Calculator mode only) to re-activate the mouse calculator and the Bluetooth connection.

**Note:** You don't need to re-connect Bluetooth after re-activate by mouse click.

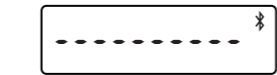
### Power-low Indicator

■ When display is dim or the **[ ]** icon appears. Please replace the batteries at your earliest convenience to avoid power running out unexpectedly.



### Keypad Lock (when Bluetooth is connected)

■ Press **[CA ON]** key and hold for 3 seconds; the keypad will be locked and display.



You still can use the mouse operation.

■ To unlock the keypad, press **[CA ON]** key and hold for 3 seconds.

## KEY INDEX

- [CA ON]** : Clear all display  
Power on the calculator  
Keypad lock / unlock
- [CI/C ESC]** : Clear input that have just been entered (Calculator Mode only)  
Clear all input (Calculator Mode only)  
Escape the input (Keypad Mode only)
- [CAL/KP]** : Switch between Calculator or Keypad Mode
- [BS]** : Backspace in keypad mode; shift each digit of the displayed numerical value and clears the last significant digit.
- [SEND]** : Send calculation results or display contents to computer (in Calculator Mode and Bluetooth connected)
- [%±]** : Used to perform percentage add-on and discount calculation. (Calculator Mode only)
- [ENTER]** : Execute calculation (Calculator Mode only)  
Enter Key -- Confirm the input (Keypad Mode only)
- [DEC-SET]** : The designated position is F (floating decimal point) 0, 2 or 3 digit(s) after decimal point.  
Used to set the number of digits after the decimal point of the calculation.  
Press **[CA ON]** and then keep pressing **[DEC-SET]** key, the display will change in the sequence of F → 0 → 2 → 3 → F. (Calculator Mode only)

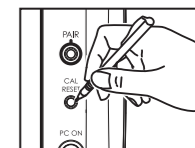
## SPECIFICATION

Power Source : AA-size Alkaline batteries x 2  
Wireless connection : Bluetooth 2.0  
Usable temperature : 0°C to 40°C (30°F to 104°F)  
Dimension : 120mm (L) x 60mm (W) x 30mm (H)  
Weight : 88g (without battery) / 136g (with battery)  
(Specifications are subject to change without notice)

## TROUBLESHOOTING

The mouse calculator is not connected / not function properly.

1. Check battery placement direction.
2. Make sure computer meets the system requirements described.
3. Check to see if Bluetooth hardware and software are installed correctly and enabled.
4. Remove obstacles between personal computer and the mouse calculator.
5. To have pairing again if the mouse calculator was being used by another personal computer just before.
6. Change new batteries if **[ ]** icon appears.
7. Try to switch off and switch on the Mouse and then wait for 3 sec. Start over the process again.
8. No display after Bluetooth ON, press **[CA ON]** key and check if **[ ]** icon appears.
9. Assure the Bluetooth USB adapter (dongle) function properly.
10. In Mac systems the Idle mode triggers a connection loss warning message. Please ignore the message and have a mouse click to resume. This warning message is a standard feature of Mac OS and it doesn't impact your Bluetooth connection.
11. Electromagnetic interference or electrostatic discharge may cause the display to malfunction. Should this occur, use the tip of a ball point pen (or similar sharp object) to press the **[CAL RESET]** button on the back of the mouse calculator.



## TIPS

- \* You are suggested to use the laser mouse on a plain smooth surface.
- \* For travelling user, X Mark I mouse calculator provides one sliding switch on the bottom. When not use just slide to the "OFF" position to power-off the Bluetooth.
- \* Instruction screen or set up might vary between difference PC or version of Bluetooth device driver.
- \* If your PC does not has build-in Bluetooth device, you need to purchase the Bluetooth USB adaptor (dongle) and follow its instruction.
- \* When you use another personal computer. Please refer to initial setup and do "pairing" again.

佳能电产香港有限公司  
香港新界葵涌货柜码头路八十二至一百号永得利广场第一期十七楼  
佳能(中国)有限公司  
北京市东城区金宝街89号金宝大厦15层

修定日期: 2011.08

E-IM-2653