

Canon

MP120-MG

电子计算器
Electronic Calculator

使用说明书
INSTRUCTIONS

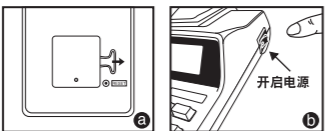


中国制造 / 中国印制
PRINTED IN CHINA

■ 在使用本产品前, 请务必先仔细阅读本使用说明书。

开始运作

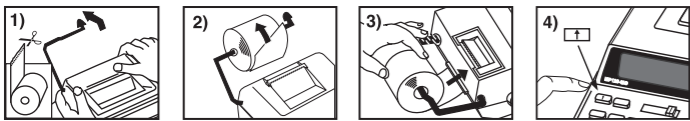
- 1) 請先將置于計算器后的膠帶移走及按下[RESET]鍵。(见图 a)
- 2) 开启电源。(见图 b)



中国语

安装打印纸

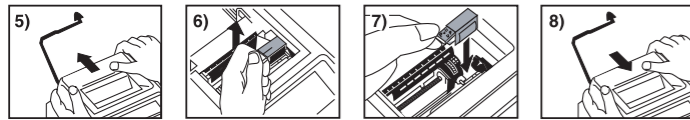
- 1) 抬起纸臂。(见图1)
 - 当安装打印纸时, 请如图所示将纸的边端切齐。
- 2) 将新纸卷放入纸臂内。纸卷的边端须如图箭头所示方向放好。(见图2)
 - 适合的纸卷: 宽 57 毫米 / 直径: 86 毫米
- 3) 如图所示将纸卷放入机身后的縫隙。(见图3)
- 4) 开启电源, 如图所示按 键将纸卷推前。(见图4)



更换色带 (CP-13)

注意: 请先关掉电源

- 1) 依箭头 方向按下, 移开打印机盖。(见图5)
- 2) 将旧墨轮提起及将它移走。(见图6)
 - 为了保持墨轮清晰的打印质量, 在使用8卷纸后请更换墨轮。
- 3) 把新的CP-13墨轮插入先前位置。(见图7)
- 4) 盖回打印盖。(见图8)
 - 本机只适用CP-13墨轮
 - 因机械所造成的困难, 请不要自行在墨轮上自行添补油墨

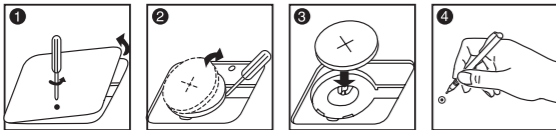


后备电池更换

当电源关闭或不能接驳交流电时。记忆后备电池便会保留货币匯率, 税率, 时间及日历的设定。

电 池: 锂电池 (类型: CR2032)
电池寿命: 后备复制时间约2000句钟

警告: 如果使用不正确的电池, 可能会引致电池爆炸。
请根据处理电池指令, 来处理电池。



后备电池更换后, 请紧记按下[RESET]键及重新输入货币匯率, 税率, 时间及日历。

一般保养须知

- 1) 切勿在阳光直射下使用计算器。亦须避免把它放置于阳光猛烈, 潮湿, 肮脏及温度急速变化的地方。
- 2) 清洁机体时只能用干布, 切勿使用清水或清洁溶剂。
- 3) 使用打印机时, 请先检查打印纸卷是否已经装妥。
- 4) 避免于灰尘飞扬或满布铁屑物的地方使用计算器, 因为打印机内装有永久电子磁石。
- 5) 切勿使用坚硬物体按键或把重物压在机体上, 避免在机上留下刮痕。
- 6) 如有关电的故障发生, 应马上截断电源。清除计算器和电源之间的障碍物, 以便随时截断电源。
- 7) 电源插座应安装在设备附近。
- 8) 根据与静电放环境, 样品可能会出现故障, 并要求用户重置样品。

小数点选择开关

: 用于指定计算结果的 (0, 2, 3, 4) 小数点位置。

+ (加模式): 自动以2位小数执行加法和减法, 便于货币计算。

F (合并小数点): 最多可显示至12位数字。

四舍五入开关

: 用于对计算结果只入不舍 () , 四舍五入 (5/4) , 或只舍不入 () 到预先选择的小数数位。

总计运算 / 税率设定开关

/ **总计运算:** 将开关设置在 "GT" 时, 结果会被累积在总计记忆当中。当按 键时, 便会显示出小总计结果, 并列印出 *+ 符号。当按 键时, 便会显示出中总计结果, 并打印出 G< 符号。连续按下两次 键, 便会显示出 G*, 并同时清除总计。

税率设定: 将开关设置在 "RATE SET" 时, 便会设定或重呼税率。

打印 / 项目运算开关

打印关: 输入和结果都会显示在萤光屏, 但不会打印出来。

打印开: 输入和结果都会显示在萤光屏, 并打印出来。

项目运算: 将开关设置于 "ITEM" 时, 可以打印出 , , 或 键被按过的次数 (可以达到999次), 当 , , 和 这些键被按时, 项目运算将被打印在卷纸的左面。

主要功能

消除输入/清除键: 用于消除错误之输入或所有已有运算, 除记忆内容外, 并可清除溢出错误。

相等键: 用于计算乘数或除数之结果。

非计算/小计键: 用于打印出对计算并无影响之数字, 例如编号, 日期, 数字被打印在纸的左边。它也可用于计算时获取中段运算结果。

总计键: 用于计算加数或减数之结果。

数据溢出功能

在下列情况下, "E" (错误) 将会显示在萤光幕上, 键盘也会被锁住, 不能继续操作。按 键可清除溢出。

- 1) 计算结果或内存数字超过12位数字。
- 2) 被0除时。
- 3) 连续操作的速度超过计算处理速度。(缓冲器溢出)

■ 电磁干扰和静电放电会导致显示异常, 或导致记忆内容丢失或被更改。若出现此情况, 可用圆珠笔尖 (或其他类似物体) 按下计算器背后的 [RESET] (意重置) 按钮。重置后, 请紧记重新输入货币匯率, 税率, 时间及日历。



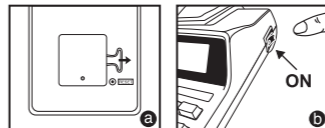
规格

电源: 交流电压220-240, 50/60Hz
使用温度: 摄氏0至40度 (华氏32至104度)
运算容量: 最高可达12位字
尺寸: 294毫米 (长) x 210毫米 (阔) x 74毫米 (高)
重量: 1054克
(若有任何更改, 将不作另行通知)

Before Starting

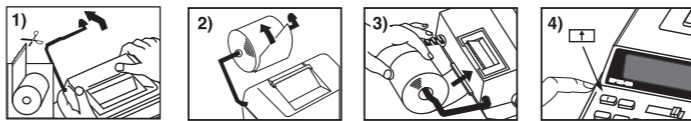
ENGLISH

- 1) Remove the insulation tape at the back of calculator and press [RESET] key before use. (Figure a)
- 2) Turns power on. (Figure b)



Inserting Printing Paper

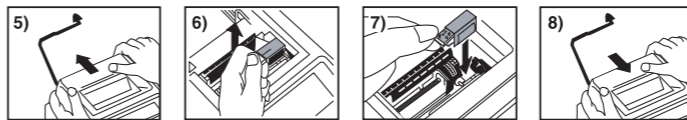
- 1) Lift up the paper arm. (Figure 1).
 - When inserting the paper, cut the edge of the paper as shown.
- 2) Place the new paper roll on the arm. The edge of the paper should be positioned as shown (Figure 2).
 - Suitable paper roll – Width: 57mm (2-1/4") / Diameter: 86mm (3-3/8") max.
- 3) Insert the paper into the slit located at the back of the machine as indicated (Figure 3).
- 4) Turn the power switch on. Press the paper feed key to advance the paper (Figure 4).



Replacing The Ink Roller (CP-13)

Note: Turn power switch off.

- 1) Remove the printer cover by pushing down on the mark. (Figure 5)
- 2) Hold the left side of the ink roller indicated as "pull up" and lift the ink roller up to remove it. (Figure 6)
 - To maintain clear printing, change the ink roller after about 8 rolls of printing paper have been used.
- 3) Insert a new ink roller into position. (Figure 7)
- 4) Replace the printer cover. (Figure 8)
 - Use only the Ink Roller CP-13
 - Do not attempt to refill the ink roller, since this may cause mechanical difficulties.



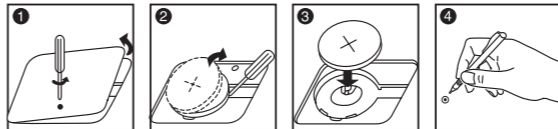
Backup Battery

Memory backup battery retains the currency rate, tax rate, calendar and clock setting, even if the power is off or the AC cord is disconnected.

Battery : 1 Lithium battery (Type : CR2032)

Battery life : Backup time 2000 hours

CAUTION: Risk of explosion if battery is replaced by an incorrect type. Dispose of used batteries according to the instruction. Dispose of batteries according to local regulations. Do not dispose as household waste.



After replace the back-up battery, press the [RESET] button, after resetting be sure to set the currency rate, tax rate, clock and calendar again.

General Maintenance

- 1) Do not use or leave the calculator under direct sunlight. Press subject to rapid temperature changes, high humidity, dust and dirt should also be avoided.
- 2) Use a dry cloth to clean the casing of the unit. Do not use water or detergents.
- 3) Activate the printer when the paper roll is loaded.
- 4) Avoid using the calculator in places where there are iron filings, as this may affect the electrical circuits of the calculator.
- 5) Do not place anything on top of the machine, particularly on top of the printer mechanism.
- 6) Pull the main plug out of the wall socket if you want to switch off the main power or in case of electrical fault (i.e. smoke), disconnect the plug from the electrical socket outlet immediately.
- 7) The AC outlet must be located near the equipment and easily accessible.
- 8) Under the environment with electrostatic discharge, the sample may malfunction and require user to reset the sample.

Decimal Point Selector Switch

: 0 2 3 4 F

– Used for designating the decimal point position (+ 0 2 3 4 F) for calculated results.

+ (Add-Mode)

– Addition and subtraction functions are performed with an automatic 2-digit decimal. It is convenient for currency calculations.

F (Floating Decimal Point)

– All effective numbers up to 12 digits are printed or displayed.

Rounding Switch

: 5/4

– Used for round-up [], round-off [5/4], or round-down [] to the pre-selected decimal digits in the result.

Grand Total / Tax Rate Set Switch

GRAND TOTAL

/

– When the calculations are performed with the GT switch set to "ON", the totals are accumulated in the grand total memory. Each time is pressed, the subtotal number is printed with the symbols G+. When is pressed, the intermediate grand total is printed with the symbols G<. Press successively to clear the grand total followed by the symbols G*.

TAX RATE SET

– Set switch to "TAX RATE SET" for setting or recalling the TAX rate.

Print / Item Count Switch

PRINT OFF

– Entries and results will appear on the display, but will not be printed out.

PRINT ON

– Entries and results will appear on the display and will be printed out.

ITEM

– Set switch to "ITEM" to count the number of times the , , and keys have been pressed. The item count will be printed on the left hand side of the paper roll (up to 999 times) when the , , or keys are pressed.

Important Functions to Remember

Clear Entry and Clear Key – Press once to clear last entered value. Press again to clear all entered values except memory. This key is also used for clearing the overflow error.

Equal Key – Used for obtaining multiplication and division results.

Non-Add/Subtotal Key – Used for printing out information which does not affect the calculation such as dates and serial numbers. Figure are printed on the left-hand side of the paper. It is also used for obtaining intermediate results.

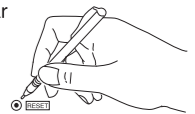
Total Key – Used for obtaining addition and subtraction results.

Overflow

In the following cases, when "E" is displayed, a dotted line is printed, the keyboard is electronically locked, and further operation is impossible. Press to clear the overflow. The overflow occurs when:

1. The result or the memory content exceeds 12 digits to the left of the decimal point.
2. Dividing by "0".
3. The sequential operation speed is faster than the calculation processing speed. (Buffer Register Overflow)

■ Electromagnetic interference or electrostatic discharge may cause the display to malfunction or the memory, currency rate and tax rate to be lost or altered. Should this occur, use the tip of a ballpoint pen (or similar sharp object) to press the [RESET] button on the back of the calculator. After resetting be sure to set the calendar, clock, currency rate and tax rate again.



Specifications

Power Source: AC200V – AC240V, 50/60Hz
Operation Temperature: 0°C to 40°C (32°F to 104°F)
Calculating Capacity: 12 digits maximum
Dimension: 294mm (L) x 210mm (W) x 74mm (H) /
Weight: 1054g
(Subject to change without notice)

日历及时间功能 / CLOCK AND CALENDAR FUNCTION

设定 / SETTING : DECIMAL (0 2 3 4 F), ROUNDING (5/4), GT (OFF ON TAX RATE SET), PRINT (OFF ON ITEM)

- 用于开关日历及时间式样。
Used to switch between calendar or clock mode.
- 在时间功能设定时,用于开关12或24小时的时间式样。
Used to switch between 12 or 24 hour at clock mode.
- 在日历及时间式样时,用于设定日子及时间。
Used to set the date and time in calendar & clock mode.
- 在时间功能设定时,用于开关AM或PM式样。
Used to switch between AM or PM at clock mode time setting.
- 在日历的式样时,用于选择年月日的格式YYYY/MM/DD, DD/MM/YYYY或MM/DD/YYYY。
Used to select date format between "YYYY/MM/DD", "DD/MM/YYYY" or "MM/DD/YYYY" at calendar mode.

日期设定 / Date Setting

例子 / Example : 2011年9月10日 / 2011 September 2011

步骤 / Step	操作 / Operation	显示 / Display	列印 / Print out
1.	01-01-2006	01-01-2006	01-01-2006.....
2.	CLOCK DATE SET (保持3秒 / Hold 3 seconds)	01-01-2006	
3.	0 9 1 0 2 0 1 1	09-10-2011	09-10-2011.....
4.	CE/C (返回计算模式 / Return to calculation mode)	0.	0.C

时间设定 / Time Setting

例子 / Example : 下午 3:18 / 3:18 p.m.

步骤 / Step	操作 / Operation	显示 / Display	列印 / Print out
1.	在计算模式 / On Calculation mode	AM 12-00-18	...09-10-2011...
2.	CLOCK DATE SET (保持3秒 / Hold 3 seconds)	AM 12-00 18	...12-00...
3.	0 3 1 8 AM PM	PM 03-18-00	...03-18...
4.	CE/C (返回计算模式 / Return to calculation mode)	0.	0.C

计算例子 / CALCULATION EXAMPLE

设定 / SETTING : DECIMAL (0 2 3 4 F), ROUNDING (5/4), GT (OFF ON TAX RATE SET), PRINT (OFF ON ITEM)

如开机情况与如下不符,则按如下所示调置这些开关键。

If switches on your calculator do not match the example below, please set switches as shown.

计算 / Calculation	操作 / Operation	列印 / Print out
2+(3x4)-5=9	CE/C, 2+, 3x, 4=	0. C 2.00 + 3. x 4. = 12.00 * 12.00 + 5.00 - 9.00 *
123 x 756 = 56,088 (456)	123 X, 756 CE/C, 456 =	123. x 456. = 56,088.00 *
123 x 455 = 56,088 (6)	123 X, 455 → 6 =	123. x 456. = 56,088.00 *

向上化整 / Round-up

计算 / Calculation	操作 / Operation	列印 / Print out
28+3 = 9.3333333333	ROUNDING (5/4)	28. ÷ 3. = 9.34 *

四舍五入 / Round-off

计算 / Calculation	操作 / Operation	列印 / Print out
11+3 = 3.6666666666	ROUNDING (5/4)	11. ÷ 3. = 3.67 *

向下化整 / Round-down

计算 / Calculation	操作 / Operation	列印 / Print out
11+3 = 3.6666666666	ROUNDING (5/4)	11. ÷ 3. = 3.66 *

总计运算 / Grand Total

设定 / SETTING : DECIMAL (0 2 3 4 F), ROUNDING (5/4), GT (OFF ON TAX RATE SET), PRINT (OFF ON ITEM)

计算 / Calculation	操作 / Operation	列印 / Print out
123+456 = 579 +) 488-390 = 98 677 +) 655+188 = 843 1,520	123 +, 456 +, 488 x, 390 -, 655 +, 188 +, 843 G+, 1,520 G◇	123.00 + 456.00 + 579.00 G + 488.00 + 390.00 - 390.00 G + 98.00 G + 677.00 G◇ 655.00 + 188.00 + 843.00 G + 1,520.00 G◇ 1,520.00 G *
(Clear Grand Total)	GT	

项目运算 / ITEM COUNT

设定 / SETTING : DECIMAL (0 2 3 4 F), ROUNDING (5/4), GT (OFF ON TAX RATE SET), PRINT (OFF ON ITEM)

计算 / Calculation	操作 / Operation	列印 / Print out
18 1) 14 2) +) 23 3) 55 - 20 4) +) 10 5) 45	18 +, 14 +, 23 +, 55 =, 20 -, 10 +, 45 *	18.00 + 14.00 + 23.00 + 003..... 55.00 ◇ 20.00 - 10.00 + 005..... 45.00 *

非计算运算 / DATA PRINTOUT

设定 / SETTING : DECIMAL (0 2 3 4 F), ROUNDING (5/4), GT (OFF ON TAX RATE SET), PRINT (OFF ON ITEM)

计算 / Calculation	操作 / Operation	列印 / Print out
Oct. 12 2009 1,860 1,420	10 12 2009 #, 1860 +, 1420 +	# 10.12.2009..... 1,860.00 + 1,420.00 +
Oct. 13 2009 2,380 2,200 +) 7,860	10 13 2009 #, 2380 +, 2200 +, 7,860 *	# 10.13.2009..... 2,380.00 + 2,200.00 + 7,860.00 *

记忆运算 / MEMORY CALCULATION

设定 / SETTING : DECIMAL (0 2 3 4 F), ROUNDING (5/4), GT (OFF ON TAX RATE SET), PRINT (OFF ON ITEM)

计算 / Calculation	操作 / Operation	列印 / Print out
243 x 2 = 486 +) 576 x 5 = 2,880 3,366 -) 75 + 103 = 178 3,188	243 X, 2 M+, 576 X, 5 M+, 75 M◇, 103 +, 178 X, M-, Mx	0. C 243. x 2. = 486.00 M+ 576. x 5. = 2,880.00 M+ 3,366.00 M◇ 75.00 + 103.00 + 178.00 * 3,188.00 M*

商业运算 / BUSINESS CALCULATION

COST 用于计算成本、售价及利润额。输入任意两项之值,即可获得差额值(如,输入成本数值及售价即可获得利润额)。

SELL 用于计算成本、售价及利润额。输入任意两项之值,即可获得差额值(如,输入成本数值及售价即可获得利润额)。

MARGIN Used for calculating the cost, selling price and profit margin amount. Enter the value of any 2 items to obtain the balance value item. (e.g. enter the value of the cost and the selling price to obtain the profit margin %.)

计算 / Calculation	操作 / Operation	列印 / Print out
成本计算 / Calculating cost 销售价/Selling Price: \$2,000 利润率/Profit Margin: 30% 成本/Cost = ?(\$1,400)	2000 SELL, 30 MARGIN	2,000. ** 30. M% 1,400.00 C*
销售价计算 / Calculating selling price 成本/Cost: \$1,500 利润率/Profit Margin: 20% 销售价/Selling Price=?(\$1,875)	1500 COST, 20 MARGIN	1,500. C* 20. M% 1,875.00 **
利润率计算 / Calculating profit margin 成本/Cost: \$1,500 销售价/Selling Price: \$2,000 利润率/Profit Margin=?(25%)	1500 COST, 2000 SELL	1,500. C* 2,000. ** 25.00 M%

税项运算 / Tax calculation

TAX+ 增加税款键: 用于将税款加到显示的数位上。
Add Tax Key : Used for adding the tax amount to the displayed figure.

TAX- 减去税款键: 用于从显示的数位上减去税款。
Deduct Tax Key : Used for deducting the tax amount from the displayed figure.

计算 / Calculation	操作 / Operation	列印 / Print out
设定税率 / Set tax rate 税率/Tax rate=5%	GT →, OFF ON TAX RATE SET, 5 ←, GT	0. % 5. %
税率增加/Add the tax Amount 价格/Price\$2,000 (不包税率/without tax)	2000 TAX+	2,000. 5. % 100.00 △ 2,100.00 *
税率减少/Add the tax Amount 销售价/Selling Price\$3,150 (包税率/with tax)	3150 TAX-	3,150. 5. % -150.00 △ 3,000.00 *

注意: 当电插头或后备电池(CR2032)发生故障不能接驳电源后,储存的日期,时间,货币汇率及税率将会删除。在这种情况下,请重新输入日期,时间,货币汇率及税率。

Note: If all the power sources and backup battery "CR2032" are disconnected, the clock, calendar, currency rate and tax rate will be cleared. In this case, please set the clock, calendar, currency rate and tax rate again.

货币转换运算 / Currency Conversion

设定 / SETTING : DECIMAL (0 2 3 4 F), ROUNDING (5/4), GT (OFF ON TAX RATE SET), PRINT (OFF ON ITEM)

CE/C 储存货币汇率 -- 按 **CE/C** 键,再按下 **DATE RATE** 键并保持1秒,然后输入货币汇率,并按下 **CE/C** 键以保存货币汇率。

Store the Currency Rate - Press **CE/C**, **DATE RATE** and hold for 1 second, then enter the currency conversion rate and press **CE/C** to store the rate.

LOCAL 重呼货币汇率 -- 按 **CE/C** 及 **LOCAL** 键便可重呼已保存的货币汇率。

Recall the Currency Rate - Press **CE/C**, **LOCAL** to recall the stored currency conversion rate.

LOCAL 按下 **LOCAL** 键,将货币显示由 **LOCAL** 换算至 **CE/C**。

Press **LOCAL** to convert currency figure displayed from **LOCAL** to the **CE/C**.

CE/C 按下 **CE/C** 键,将货币显示由 **CE/C** 换算至 **LOCAL**。

Press **CE/C** to convert displayed figure from **CE/C** to **LOCAL**.

货币汇率是1或更高,您可以输入最多六个数字。而货币汇率低于1,您可以输入最少七个数字,包括数字零的整数和前零。(虽然只有六个数字,但可指定计算从左边数并与第一个非数字的零开始。)

For rates of 1 or greater, you can input up to six digits. For rates less than 1 you can input up to 7 digits, including 0 for the integer digit and leading zeros (though only six significant digits, counted from the left and starting with the first non-zero digit, can be specified).

计算 / Calculation	操作 / Operation	列印 / Print out
储存货币汇率/Currency Rate Store CE/C = 1.35 (美元/US\$) 当地货币/Local = 1 (欧洲货币)	CE/C, 1.35 DATE RATE, CE/C	0. C 1.35 C=
货币转换/Convert Currency 1) 欧元/Euro 78 = 美元/US\$? (US\$105.3)	78 LOCAL	78. ◇ 1.35 C= 105.30 *
2) 美元/US\$ 48 = 欧元/Euro? (35.56)	48 CE/C	48. 1.35 C= 35.56 ◇*
重呼货币汇率/Recall Currency Rate	CE/C, LOCAL	0. C 1.35 C=

溢出运算 / OVERFLOW

计算 / Calculation	操作 / Operation	列印 / Print out
1) 550000000000 x) 23 1265000000000 (溢出/ERROR)	550000000000 X, 23 =	550,000,000,000. x 23. = 12,650,000,000.00 * 0. C
2) 999999999999 (例子/e.g.: 税率/Rate 1.35)	999999999999 LOCAL	999,999,999,999. ◇ 1.35 C= 1,349,999,999,999 * 0. C
3) 6 ÷ 0 = 0 (溢出/ERROR)	6 ÷, 0 =	6. ÷ 0. = 0. * 0. C

佳能电产香港有限公司
香港新界葵涌货柜码头路82至100号永德利广场第一期17楼
北京博怡嘉业科技股份有限公司
北京西城区西直门外大街1号西环广场T2号楼11层C11-C12