



E-IM-2759

二合一无线
数字键盘计算器
RADIO FREQUENCY
KEYPAD CALCULATOR

重要提示：请在使用前阅读使用无线计算器前，请阅读以下说明及安全注意事项。请妥善保存此说明书，以备日后参考。

中文

该设备可兼容于WINDOWS和MACINTOSH系统

确保插入无线电接收器，再连接计算器键盘与电脑。

使用建议和注意事项

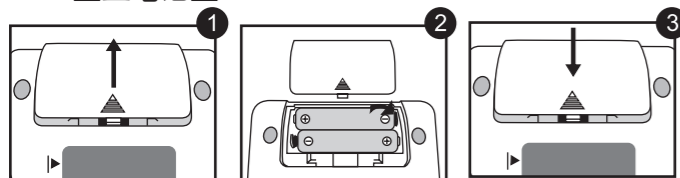
- 如计算器键盘开始冒烟、发出异味或发热时，切勿继续使用，否则可能导致失火或触电。
- 切勿使用湿布或油漆稀释剂等挥发性液体清洁计算器键盘，而仅可使用干燥软布进行清洁。
- 切勿以燃烧等不当方式处理计算器键盘，以免造成人身伤害或损害。建议您按照当地及本国法规进行回收或处理。
- 电池须置于儿童无法触及之处。
- 切勿将电池暴露于高温或直接热源下，亦勿对其作燃烧处理。
- 切勿将新旧电池或不同型号的电池混用。
- 切勿让金属物件接触设备上的电池端头，否则会导致变烫及燃烧。
- 如电池耗尽或放置时间过长，请将其取出。
- 及时取出电量不足或用尽的电池，并按照当地及本国法律法规进行回收或处理。
- 如电池发生电解液外泄，则取出所有电池，注意勿使外泄液体接触到您的皮肤或衣物。如电解液接触到皮肤或衣物，应立即用清水冲洗。

初次设置说明

针对操作系统不同，设置稍有不同。所供说明普遍适用于Windows® XP, Windows Vista®, Windows® 7, Windows® 8 以及 Macintosh等系统。

电池安装

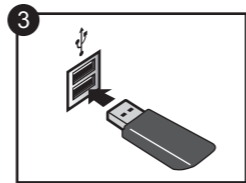
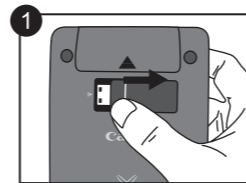
- 按箭头所指方向滑动，去掉计算器键盘背面的电池盖。
- 确保电池阴阳极与电池箱内部极性相匹配，安装AAA型号碱性电池。
- 盖上电池盖。



警告：如果安装了型号不正确的电池，则存在爆炸风险。请根据说明处理废弃电池。

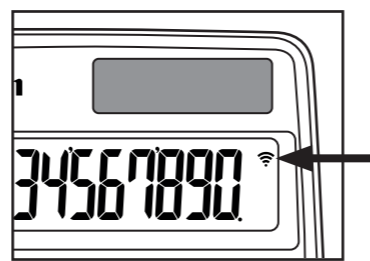
插入无线电接收器

- 从插槽中取出无线电接收器。
- 按下 **WAKE UP** 键。
注意：显示屏上方的图标 (📶) 将会闪烁。否则，请再按 **WAKE UP** 键。
- 在电脑USB接口处插入无线电接收器。
注意：如果成功连接，📶 图标将会停止闪烁。
- 设置完成，现在可使用计算器键盘了。



无线电图标

- 设置连接过程中，无线电图标 (📶) 将会不断闪烁。
- 设置一旦成功连接至电脑，显示屏上方的无线电波图标 (📶) 则会停止闪烁。



键盘索引

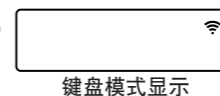
- ON/CA** 接通电源
- WAKE UP** 清除所有显示 | 键盘锁定 / 解锁
- WAKE UP** 重新连接无线电
- ESC/CL/C** 清除最后输入信息 | 清除所有输入信息 (仅计算器模式)
- CAL/KP** 退出输入信息 (仅在键盘模式)
- CAL/KP** 在计算器模式或键盘模式之间切换
- BACKSPACE** 在键盘模式中进行退格; 更改所显示数值的每位数字及清除末位有效数字
- SEND** 向电脑发送计算结果或显示内容 (在计算器模式下, 并连接无线电)
- %±** 用于进行百分率及相加及折扣计算 (仅在计算器模式)
- ENTER** 进行计算 (仅在计算器模式)
- ENTER** 确认输入内容 (仅在键盘模式)
- DEC-MET** 计算结果精确到小数点之后
- 按下 **ON/CA** 键, 且按下 **DEC-MET** 键不放。显示屏将按照 F → 0 → 2 → 3 → F 的顺序变化。(仅在计算器模式)
- F 代表浮动小数点

计算器模式和键盘模式

如果连接无线电，计算器键盘会呈现两种模式 - 计算器模式(CAL)和键盘模式(KP)。

计算器模式与键盘模式切换

- 欲在计算器模式与键盘模式之间切换，只需按下 **CAL/KP** 键。

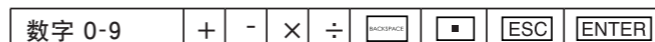


计算器模式 (连接无线电时)

- 计算器可完成标准10位数计算操作。
- 按下 **SEND** 键向电脑发送计算结果。
 - 当无线电计算器显示屏上显示“E (错误)”指示时，将不能进行发送操作。
 - 当计算器未与电脑中的无线电连接时，**SEND** 键则停用。

键盘模式 (连接无线电时)

- 可直接在电脑中输入：

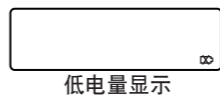


自动开关机功能

- 只有计算器，没有连接无线电
 - 休眠状态持续约七分钟，设备就会自动关闭。按下 **ON/CA** 键开启设备。
- 计算器(CAL)和键盘(KP)模式，连接无线电
 - 休眠约30分钟，无线电连接将会断开(显示反回“0”)。当设备恢复应用，只在计算器模式，没有连接无线电。按下 **WAKE UP** 键，重新与无线电连接。
 - 无线电重新连接后，设备仍然在无操作状态下超过7分钟，将自动关闭电源。按下 **ON/CA** 及 **WAKE UP** 键，以重新启动计算器及无线电连接。

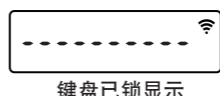
电量不足指示

- 当显示屏变暗或显示「🔋」图示时，无线电连接将失效，请尽早更换电池以避免电源意外耗尽。



键盘锁定 (连接无线电时)

- 按住 **ON/CA** 键保持3秒钟; 键盘将被锁定。
- 欲解除键盘锁定，按住 **ON/CA** 键保持3秒钟。



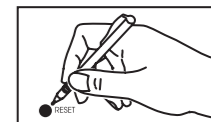
用法提示

- 使用完电脑上的计算器后，从电脑上移除接收器并把其放回计算器背面的插槽里。
- 如果使用不同电脑，请重新设置连接。
- 计算器键盘与电脑连接成功时，无线电图标将保持稳定。
- 无线电连接需要电源供电才能正常运作。
- 无线电连接断开时，计算器可以在没有电池的供电情况下正常运作 (可由太阳能电板供电)。

检修

若出现计算器键盘无法连接或不正常运行等情况，可按如下方法进行：

- 检查电池是否安装正确
- 确保计算器能够满足系统要求
- 确保无线电接收器插入电脑的USB接口并且正常运行。
- 清除个人电脑和计算器键盘间的障碍物。
- 如果接收器已插入USB接口而未能连接无线电，按 **WAKE UP** 键重新连接。
- 如果无线电接收器在其他电脑上连接过，而需要在您的电脑上使用时，请移除无线电接收器并恢复初始设置进行重新连接。
- 无线电连接后无显示，按下 **ON/CA** 键并检查 🔋 图示是否显示。
- 如果 🔋 图示显示，需要更换新电池。
- 如果显示“E”图示，键盘已锁。按 **ON/CA** 或 **CL/C** 键清理并恢复操作。(当结果或储存器超过10位数字或除数是0时，显示屏会显示“E”图示)
- 电磁干扰或静电放电可能引起显示屏故障。如发生该种情况，可用圆珠笔尖 (或类似尖锐物件) 按下计算器键盘背面的[RESET]按钮。



系统需求

硬件：预装windows x86 / x64 或以上系统的PC，采用 Intel处理器的Mac系统。
作业系统：Windows® XP (SP2 或以上) 或 Windows Vista® 或 Windows® 7 或 Windows® 8
系统：Mac OS X 10.4 ~ 10.7

规格

型号：X Mark I Keypad RF
电源：AAA型碱性电池两枚
操作温度：0°C 至 40°C
尺寸：155mm (长) x 86mm (宽) x 20mm (高)
重量：约140g 不包括电池 / 约163g 包括电池
配件：无线电接收器

备注：本计算器键盘部分，使用佳能产品的回收材料制成。可能会出现黑点或颜色不均的情况。

无线电波规格说明

频率：2.4 GHz 频率范围
连接区域：操作区域达10米远 (32.8英尺)
注意：连接区域大小受多种因素影响，例如，附近的金属物体，设备及接收器的相对位置等。

注意：所有规格如有变更，恕不另行通知。

佳能电产香港有限公司
香港新界葵涌货柜码头路82-100号永得利广场第1期17楼
佳能(中国)有限公司
中国北京东城区金宝街89号金宝大厦15层

ENGLISH

IMPORTANT: READ BEFORE USE

Please read the following instructions and safety precautions before using the Calculator Keypad. Keep this sheet on hand for future reference.

THIS DEVICE IS WINDOWS AND MACINTOSH COMPATIBLE

Be sure to plug in the Radio Frequency (RF) dongle before connecting the Calculator Keypad to your computer.

MALFUNCTION AND HANDLING WITH CARE

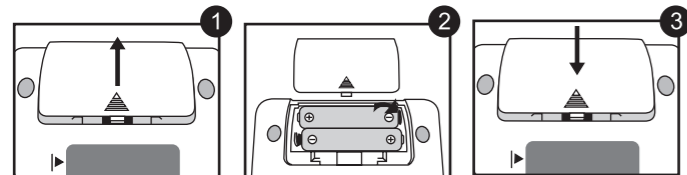
- Never continue to use the Calculator Keypad if it starts to smoke, emits a strange odor, or emits heat. Continued use of the calculator under such conditions creates the danger of fire and electric shock.
- When cleaning the Calculator Keypad, do not use a damp cloth or volatile liquid such as paint thinner; instead, use only a soft, dry cloth.
- Never dispose of the Calculator Keypad improperly (such as burning), which can lead to personal injury or harm. You should dispose of this product in accordance with local and national disposal regulations.
- Keep the batteries out of reach of children.
- Never expose batteries to high temperatures, direct heat, or dispose by incineration.
- Do not mix new and old batteries or batteries of different types.
- Do not allow metal objects to touch the battery terminals on the device; they can become hot and cause burns.
- Remove the batteries if they are worn out or have been stored for an extended period of time.
- Always remove old, weak, or worn out batteries promptly and recycle or dispose of them in accordance with local and national disposal regulations.
- If a battery leaks, remove all batteries, taking care to keep the leaked fluid from touching your skin or clothes. If fluid from the battery comes into contact with skin or clothes, flush skin with water immediately.

INITIAL SETUP INSTRUCTIONS

Set-up may vary slightly depending on the computer. Instructions provided should work universally on Windows® XP, Windows Vista®, Windows® 7, Windows® 8 and Macintosh.

BATTERY INSTALLATION

- Remove the battery cover from the back of the Calculator Keypad by sliding the cover in the direction of the arrow.
- Install AAA alkaline batteries, matching the positive (+) and negative (-) ends of each battery with the polarity indicators inside the battery compartment.
- Place the battery cover back on the battery compartment.



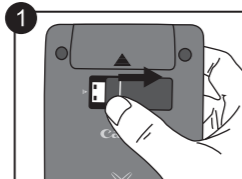
CAUTION: There is a risk of explosion if an incorrect battery type is installed. Please dispose of used batteries according to their instructions.

PLUG IN THE RF DONGLE

- Remove the RF dongle from the storage compartment.

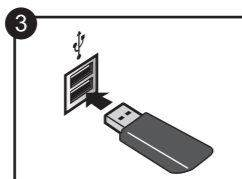
- Press the **WAKE UP** key.

NOTE: The icon on the front display should be flashing. If not, press the **WAKE UP** key again.



- Plug in the RF Dongle into an active USB port on your computer.

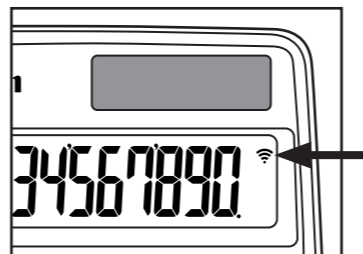
NOTE: The icon will stop flashing when successfully connected.



- Your computer is now setup to use your Calculator Keypad.

RADIO FREQUENCY ICON

- The Radio Frequency icon () will flash on and off during the setup connection process.
- Once the device is successfully connected to your computer, the Radio Frequency icon () on the front display will remain solid.



KEY INDEX

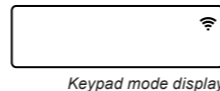
- ON/CA**: Power on
- WAKE UP**: Clear all display | Keypad lock / unlock
- ESC/CL**: Re-connect the RF connection
- CAL/KP**: Clear last input entered | Clear all input (CAL mode only)
- BACKSPACE**: Escape the input (KP mode only)
- SEND**: Switch between Calculator Mode or Keypad Mode
- %±**: Backspace in Keypad mode; in Calculator mode shifts each digit of the displayed numerical value and clears the last significant digit
- ENTER**: Send calculation results or display contents to computer (CAL mode with RF Connection)
- DEC-SET**: Perform percentage add-on and discount calculation. (CAL mode only)
- ON/CA**: Execute calculation (CAL mode only)
- ON/CA**: Enter Key -- Confirm the input (KP mode only)
- ON/CA**: Set the number of digits displayed in calculation after the decimal point.
- ON/CA**: Press **ON/CA** and then press and hold **DEC-SET**, the display will change in the sequence of F → 0 → 2 → 3 → F (CAL mode only)
- F represents a floating decimal point

CALCULATOR MODE AND KEYPAD MODE

When RF connected, this Calculator Keypad has 2 modes - Calculator Mode (CAL) and Keypad Mode (KP).

Switch between Calculator and Keypad Mode

- To switch between Calculator and Keypad mode, simply press the **CAL/KP** key.

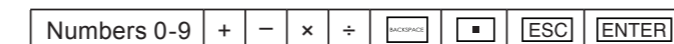


Calculator Mode (with RF connection)

- The calculator performs normal 10-digit calculator operations.
- Send calculation results or display contents to a computer by pressing **SEND**.
 - You cannot perform a send operation while the E (Error) indicator is shown on the Calculator Keypad display.
 - The **SEND** key is disabled when the calculator is not RF connected.

Keypad Mode (with RF connection)

- Input the following to a computer directly:



Auto Power Off and Wake-up

- Calculator Only, NO RF Connection**
 - The device will automatically power off after approximately 7 minutes of inactivity. Press the **ON/CA** key to turn on the device.
- CAL and KP Modes, with RF Connection**
 - The RF connection will be disconnected after approximately 30 minutes of inactivity (the display will reset to "0"). The device will function the same as "Calculator Only, NO RF Connection". Press **WAKE UP** to re-activate the RF connection.
 - After the RF connection is disconnected, the device will automatically power off after an additional 7 minutes of inactivity. Press **ON/CA** and then **WAKE UP** to turn on the device and re-activate the RF connection.

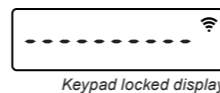
Power-low Indicator

- When the display is dim or the icon appears, RF connection will not function. Replace the batteries to avoid running out of power unexpectedly.



Keypad Lock (with RF connection)

- Press the **WAKE UP** key and hold for 3 seconds to lock.
- To unlock, press the **WAKE UP** key and hold for 3 seconds.



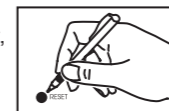
USAGE TIPS

- When finished using the calculator with a computer, remove the dongle from the computer and replace it in the slot on the back of the device.
- When using with a different computer, please connect again with the initial setup.
- The RF icon will remain on (solid, not flashing) when the Calculator Keypad is successfully connected to your computer.
- RF connection requires battery power to function properly.
- When RF connection is off, calculator functions can be used without batteries (powered by solar panel).

TROUBLESHOOTING

If the Calculator Keypad is not connected or not functioning properly:

- Check battery placement direction.
- Make sure computer meets the system requirements described.
- Make sure the RF dongle is plugged into the computer's USB port and is functioning properly.
- Remove obstacles between personal computer and the Calculator Keypad.
- If the RF connection is lost and the dongle is plugged into the computer's USB port, press the **WAKE UP** key to re-connect.
- If recently connected with a different computer, reset the connection to your current computer by removing the RF dongle and repeating the initial setup.
- If the display disappears after the RF connection is established, press **ON/CA** key and check if the icon appears.
- Change to new batteries if the icon appears.
- If the "E" icon appears, the keypad is locked. Press **ON/CA** or **CL/C** to clear and resume operation. (The "E" icon occurs when the result or memory content exceeds 10 digits to the left or when dividing by "0".)
- Electromagnetic interference or electrostatic discharge may cause the display to malfunction. Should this occur, use the tip of a ball point pen (or similar object) to press the [RESET] button on the back of the Calculator Keypad.



SYSTEM REQUIREMENTS

Hardware: Windows based PC x86 / x64 or above, Intel-based Mac
Operating System: Windows® XP (SP2 or above) or Windows Vista® or Windows® 7 Windows® 8 or Mac OS X 10.4 ~ 10.7

DEVICE SPECIFICATIONS

Model: X Mark I Keypad RF
Power Source: AAA-size Alkaline batteries x 2
Operating Temperature: 0°C to 40°C
Dimension: 155mm (L) x 86mm (W) x 20mm (H)
Weight: 140g without batteries / 163g with batteries
Accessory: RF Dongle

Notes: This calculator keypad is made from Canon recycled material which might have black dot or uneven color.

RADIO FREQUENCY SPECIFICATIONS

Frequency: 2.4 GHz frequency range
Connection Range: The operating range is up to 10 meters (32.8 feet)
NOTE: Connection range is affected by many factors, such as nearby metallic objects and the relative positioning of the device and the receiver.

NOTE: All specifications are subject to change without notice.

运算例子/Calculation Examples

运算/CALCULATION	操作/OPERATION	显示/DISPLAY
$\frac{+}{-}$ $\frac{\times}{\div}$		1234567890

小数点设定为"2"/ Decimal setting "2" **ON/CA** **DEC-SET** 按下不放/ Press & Hold **ON/CA** 2

混合/Mixed

140-35+22=127	ON/CA 140 - 35 + 22 ENTER	(127.00)
2xZ=6	2 X 2 CL/C 3 ENTER	(6.00)
-7x9=-63	ON/CA -7 X 9 ENTER	(-63.00)
(2+4)÷3x8.1=16.2	ON/CA 2 + 4 ENTER 3 X 8.1 ENTER	(16.20)

常数/Constant

2+3=5	2 + 3 ENTER	(5.00)
4+3=7	4 + 3 ENTER	(7.00)
1-2=-1	1 - 2 ENTER	(-1.00)
2-2=0	2 - 2 ENTER	(0.00)
2x3=6	2 X 3 ENTER	(6.00)
2x4=8	4 X 2 ENTER	(8.00)
6÷3=2	6 ÷ 3 ENTER	(2.00)
9÷3=3	9 ÷ 3 ENTER	(3.00)

功率,分数/Power, Fraction

3 ⁴ =81	3 X ENTER ENTER ENTER	(81.00)
1/5=0.2	1 ÷ 5 ENTER	(0.20)
1/(2x3+4)=0.1	2 X 3 + 4 ENTER	(0.10)

百分比运算/Percentage Calculation

1200x $\frac{12}{100}$ =144	1200 X 12 %±	(144.00)
1200x $\frac{15}{100}$ =180	15 %±	(180.00)
1200+(1200x20%)=1,440	1200 + 20 %±	(1'440.00)
1200-(1200x20%)=960	1200 - 20 %±	(960.00)

记忆运算/Memory Calculation

3x4 = 12	ON/CA 3 X 4 M±	(M 12.00)
-) 60+2 = 30	60 + 2 M±	(M 30.00)
-18	RM/CM	(M -18.00)
+) 200	200 M±	(M 200.00)
182	RM/CM (Recall Memory)	(M 182.00)
	RM/CM (Clear Memory)	(182.00)

溢出/Overflow

1) 123456789x789 =9740740652100 (溢出/ERROR)	123456789 X 789 ENTER	(E 9.740740652)
2) 6+0=0 (溢出/ERROR)	6 + 0 ENTER	(E 0.)