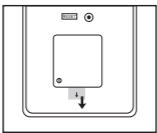




■ 在使用本产品前, 请务必先仔细阅读本使用说明书。

开始运作 中国语

請先將置于計算器底部的膠帶移走。



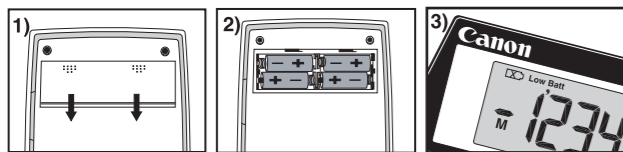
发电及替换电池

发电

- 1) 请如下图箭头所示, 移开打印机底部的电池盖。(见图1)
- 2) 安装四粒全新的电池(AA型号)于电池室内。(见图2)
- 3) 盖回电池盖。

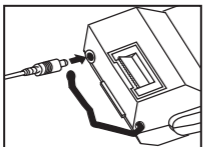
替换

- 如出现电力不足或打印纸随意推进的问题时, 可按下 CE/C 键。
- 如发现显示屏出现暗淡或打印速度减慢及出现 " LO " 图示, (见图3) 请立即更换电池。
- 如短期内不再使用此打印机, 请先将电池取出。



佳能转接器 AD-11 (不包括)

- 此机只可使用佳能转接器AD-11。
- 接驳或切断转接器前请先关掉电源。
- 当在"ON"(计算)模式时, 重新接驳转接器或替换电池, 可按 CE/C 键重新启动计算器。



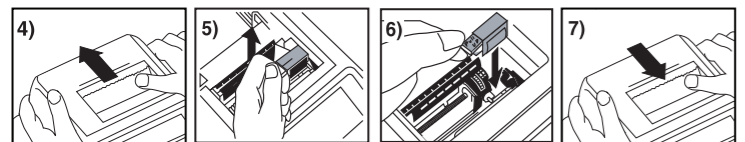
更换色带 (CP-13)

注意: 请先关掉电源

- 1) 依箭头方向按下, 移开打印机盖。(见图4)
- 2) 提起旧墨轮及将它移走。(见图5)
 - 为了保持墨轮清晰的打印质量, 在使用8卷打印纸后请更换墨轮。
- 3) 把新的CP-13墨轮插入先前位置。(见图6)
- 4) 盖回打印盖。(见图7)

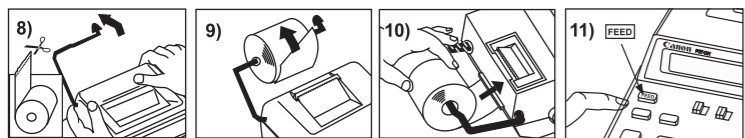
警告: 切纸边缘可能比较锋利, 请小心处理。

- 本机只适用CP-13墨轮
- 请不要自行在墨轮上自行添补油墨, 此等或会导致机械发生故障。



安装打印纸

- 1) 提起纸臂。(见图8)
- 当安装打印纸时, 请如图所示将纸的边端切齐。
- 2) 将新纸卷放入纸臂内。纸卷的边端须如图箭头所示方向放好。(见图9)
- 适合的纸卷: 宽 57 毫米 / 直径: 86 毫米
- 3) 如图所示将纸卷放入机身后的缝隙。(见图10)
- 4) 开启电源, 如图所示按 FEED 键将纸卷推前。(见图11)



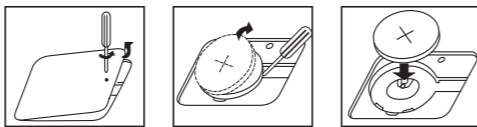
后备电池更换

当电源关闭或不能接驳交流电时。记忆后备电池会保留税率, 日历及时间的设定。

电 池: 锂电池(CR2032)

电池寿命: 后备复制时间约2000句钟

警告: 如果使用不正确的电池, 可能会引起电池爆炸。请根据处理电池指令, 来处理电池。



一般保养须知

- 1) 切勿在阳光直射下使用计算器。亦须避免把它放置于阳光猛烈, 潮湿, 肮脏及温度急速变化的地方。
- 2) 清洁机体时只能用干布, 切勿使用清水或清洁溶剂。
- 3) 避免于灰尘飞扬或满布铁屑物的地方使用计算器, 因为打印机内装有永久电子磁石。
- 4) 切勿使用坚硬物体按键或把重物压在机体上, 避免在机上留下刮痕。
- 5) 如发生电力故障, 应马上截断电源。清除计算器和电源之间的障碍物, 以便随时截断电源。
- 6) 电源插座应安装在设备附近。

小数点选择开关

: 用于指定计算结果的 (0, 2, 3) 小数点位置。

+ (加模式): 自动以2位小数执行加法和减法, 便于货币计算。

F (合并小数点): 最多可显示至12位数字。

四舍五入开关

: 用于对计算结果只入不舍 (\uparrow), 四舍五入 (5/4), 或只舍不入 (\downarrow) 到预先选择的小数数位。

电源 / 打印 / 项目运算 / 税率设定开关

电源关: 关掉电源。

电源开/打印关: 开启电源。输入和结果都会显示在萤光屏, 但不会打印出来。

电源开/打印开: 输入和结果都会显示在萤光屏, 并打印出来。

项目运算: 将开关设置于"ITEM"时, 可以打印出 + , - , M 或 M 键被按过的次数 (可以达到999次), 当 M , M , M 和 M 这些键被按时, 项目运算将被打印在卷纸的左面。

税率设定: 将开关设置在"RATE SET"时, 便会设定或重呼税率。

清除数据溢出

在下列情况下, "E" (错误) 将会显示在萤光幕上, 键盘也会被锁住, 不能继续操作。按 CE/C 键可清除溢出。

- 1) 计算结果或内存数字超过12位数字。
- 2) 被0除时。
- 3) 连续操作的速度超过计算处理速度。(缓冲器溢出)

■ 电磁干扰和静电放电会导致显示异常, 或导致记忆内容丢失或被更改。若出现此情况, 可用圆珠笔尖 (或其他类似物体) 按下计算器背后的 [RESET] (意重置) 按钮。重置后, 请牢记重新输入日历、时间和税率。



规格

使用温度: 摄氏0至40度 (华氏32至104度)

运算容量: 最高可达12位字

自动关机功能: 约七分钟

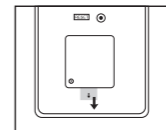
尺寸: 217毫米 (长) x 162毫米 (阔) x 56毫米 (高)

重量: 464克不连电池 / 558克连电池

(若有任何更改, 将不作另行通知)

BEFORE STARTING ENGLISH

Remove the insulation tape at the back of calculator before use.



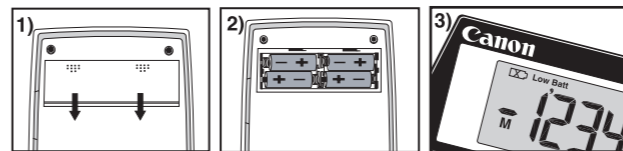
LOADING AND REPLACING BATTERIES

LOADING

- 1) Remove the battery cover by sliding in the direction of the arrow. (Figure 1)
- 2) Load 4 new AA batteries as illustrated. (Figure 2)
- 3) Replace the cover.

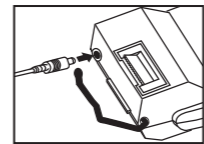
REPLACEMENT

- Low battery power may cause printing problems, or random paper advances. It can also disable the CE/C key.
- If the display is dim or the printing speed decreases or the " LO " icon appears (Figure 3), then the batteries may need to be replaced. Replace batteries to resume normal operations.
- Remove the batteries if you do not plan to use the unit for a long period of time.



AC OPERATION AD-11 (OPTIONAL)

- Only compatible with Canon AC Adapter AD-11.
- Turn the power switch to OFF before connecting or disconnecting the AC Adapter.
- When plugging in the AC adapter during the "ON" mode. Press CE/C key to restart the calculator.



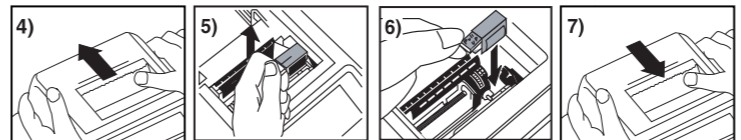
REPLACING THE INK ROLLER (CP-13)

Note: Turn power switch off.

- 1) Remove the printer cover. (Figure 4)
- 2) Hold the left side of the ink roller indicated as "pull up" and lift the ink roller up to remove it. (Figure 5)
 - To maintain clear printing, change the ink roller after about 8 rolls of printing paper have been used.
- 3) Insert a new ink roller. (Figure 6)
- 4) Replace the printer cover. (Figure 7)

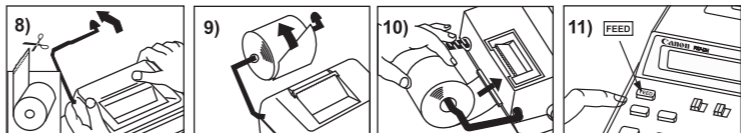
CAUTION: The edge of the paper cutter may be sharp, please handle with care!

- Use only the Ink Roller CP-13
- Do not attempt to refill the ink roller, since this may cause mechanical difficulties.



INSERTING PRINTING PAPER

- 1) Lift up the paper arm. (Figure 8)
 - When inserting the paper, cut the edge of the paper as shown.
- 2) Place the new paper roll on the arm. The edge of the paper should be positioned as shown (Figure 9)
 - Suitable paper roll – Width : 57mm (2-1/4") / Diameter : 86mm (3-3/8") max.
- 3) Insert the paper into the slit located at the back of the machine as indicated (Figure 10).
- 4) Turn the power switch on. Press the paper feed key FEED to advance the paper (Figure 11).



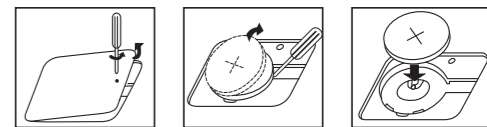
REPLACING BACKUP BATTERY

Memory backup battery retains the tax rate, calendar and clock setting, when the power is off or even when the AC cord is disconnected.

Battery : 1 Lithium battery (Type: CR2032)

Battery life : Backup time 2000 hours

CAUTION : Risk of explosion if battery is replaced by an incorrect type. Dispose of used batteries according to the instruction.



GENERAL MAINTENANCE

- 1) Do not use or leave the calculator in the direct sunlight. Areas subject to quick temperature changes, high humidity and dirt should also be avoided.
- 2) Use a dry cloth to clean the unit. Do not use water or cleaners.
- 3) Avoid using the calculator in places where there are iron filings, as this may affect the electrical circuits of the calculator.
- 4) Do not place anything on top of the machine, particularly on top of the printer mechanism.
- 5) In case of electrical fault (i.e. smoke), disconnect the plug from the electrical point immediately.
- 6) The power outlet shall be installed near the equipment and shall be easily accessible.

DECIMAL POINT SELECTOR SWITCH

: Used for designating the decimal point position (0 2 3) for calculated results.

+ (Add-Mode) : Addition and subtraction functions are performed with an automatic 2-digit decimal. It is convenient for currency calculations.

F (Floating Decimal Point) : All effective numbers up to 12 digits are printed or displayed.

ROUNDING SWITCH

: Used for round-up [\uparrow], round-off [5/4], or round-down [\downarrow] to the pre-selected decimal digits in the result.

POWER / PRINT / ITEM COUNT / RATE SET SWITCH

Power Off : Turns power off.

Power On/Print Off : Turns power on. Entries and results will appear on the display, but will not be printed out.

Power On/Print On : Entries and results will appear on the display and will be printed out.

Item : Set switch to "ITEM" to count the number of times the + , - , M and M keys have been pressed. The item count will be printed on the left hand side of the paper roll (up to 999 times) when the M , M , M or M keys are pressed.

Rate Set : Set switch to "RATE SET" for setting or recalling the TAX rate.

OVERFLOW

In the following cases, when "E" is displayed, a dotted line is printed, the keyboard is electronically locked, and further operation is impossible. Press CE/C to clear the overflow. The overflow occurs when:

1. The result or the memory content exceeds 12 digits to the left of the decimal point.
2. Dividing by "0".
3. The sequential operation speed is faster than the calculation processing speed. (Buffer Register Overflow)

■ Electromagnetic interference or electrostatic discharge may cause the display to malfunction or the contents of the memory to be lost or altered. Should this occur, use the tip of a ball point pen (or similar sharp object) to press the [RESET] button at the back of the calculator. After resetting, be sure to set the calendar, clock and tax rate again.



SPECIFICATIONS

Operation Temperature: 0°C to 40°C (32°F to 104°F)

Calculating Capacity: 12 digits maximum

Automatic Power-off: approx. 7 minutes

Dimension : 217mm (L) x 162mm (W) x 56mm (H) / 8-55/64" (L) x 6-3/8" (W) x 2-13/64" (H)

Weight : 464g (15.7oz) without batteries / 558g (18.9 oz) with batteries

(Subject to change without notice)

日历及时间功能 / CLOCK AND CALENDAR FUNCTION

设定 / SETTING :

- 用于开关日历及时间式样。
Used to switch between calendar or clock mode.
- 在时间功能设定时,用于开关12或24小时的时间式样。
Used to switch between 12 or 24 hour at clock mode.
- 在日历及时间式样时,用于设定日子及时间。
Used to set the date and time in calendar & clock mode.
- 在时间功能设定时,用于开关AM或PM式样。
Used to switch between AM or PM at clock mode time setting.
- 在日历的式样时,用于选择年月日的格式YY/MM/DD, DD/MM/YYYY或MM/DD/YYYY。
Used to select date format between "YYYY/MM/DD", "DD/MM/YYYY" or "MM/DD/YYYY" at calendar mode.

日期设定 / Date Setting

例子 / Example : 2011年9月10日 / 10 September 2011

步骤 / Step	操作 / Operation	显示 / Display	列印 / Print out
1.		01-01-2006	01-01-2006.....
2.	(按下3秒 / Hold 3 seconds)	01-01-2006	09-10-2011.....
3.	(按下3秒 / Hold 3 seconds)	09-10-2011	
4.	(返回计算模式 / Return to calculation mode)	0.	0.C

时间设定 / Time Setting

例子 / Example : 下午 3:18 / 3:18 p.m.

步骤 / Step	操作 / Operation	显示 / Display	列印 / Print out
1.	(在计算模式 / On Calculation mode)	AM 12-00-18	09-10-2011..... 12-00.....
2.	(按下3秒 / Hold 3 seconds)	AM 12-00 18	03-18.....
3.	(按下3秒 / Hold 3 seconds)	PM 03-18-00	
4.	(返回计算模式 / Return to calculation mode)	0.	0.C

计算例子 / CALCULATION EXAMPLE

设定 / SETTING :

如开机情况与以上开键不符,请依照以上所示调置这些开关键。

If switches on your calculator do not match the example below, please set switches as shown.

计算 / Calculation	操作 / Operation	列印 / Print out
$2+(3 \times 4)-5=9$		0. C 2.00 + 3. x 4. = 12.00 * 12.00 + 5.00 - 9.00 *
$123 \times 756 = 56,088$		123. x 456. = 56,088.00 *
$123 \times 456 = 56,088$		123. x 456. = 56,088.00 *

记忆运算 / MEMORY CALCULATION

计算 / Calculation	操作 / Operation	列印 / Print out
$243 \times 2 = 486$ $+ 576 \times 5 = 2,880$ $- 75 + 103 = 178$ 3,188		0. C 243. x 2. = 486.00 M+ 576. x 5. = 2,880.00 M+ 3,366.00 M+ 75.00 + 103.00 + 178.00 * 3,188.00 M*

非计算运算 / DATA PRINTOUT

计算 / Calculation	操作 / Operation	列印 / Print out
Oct. 12 2009 1,860 1,420 Oct. 13 2009 2,380 2,200 +) 7,860		# 10.12.2009..... 1,860.00 + 1,420.00 + # 10.13.2009..... 2,380.00 + 2,200.00 + 7,860.00 *

项目运算 / ITEM COUNT

计算 / Calculation	操作 / Operation	列印 / Print out
18 1) 14 2) +) 23 3) 55 - 20 4) +) 10 5) 45		18.00 + 14.00 + 23.00 + 003. 55.00 < 20.00 - 10.00 + 005. *

税项运算 / Tax calculation

设定 / SETTING :

TAX+ 增加税款键: 用于将税款加到显示的数位上。
Add Tax Key : Used for adding the tax amount to the displayed figure.

TAX- 减去税款键: 用于从显示的数位上减去税款。
Deduct Tax Key : Used for deducting the tax amount from the displayed figure.

计算 / Calculation	操作 / Operation	列印 / Print out
设定税率 / Set tax rate 税率 / Tax rate=5%		0. % 5. %
税率增加 / Add the tax Amount 价格 / Price \$2,000 (不包税率 / without tax)		2,000. 5. % 100.00 Δ 2,100.00 *
税率减少 / Add the tax Amount 销售价格 / Selling Price \$3,150 (包税率 / with tax)		3,150. 5. % -150.00 Δ 3,000.00 *

- 注意:** 当电插头, 转接器, 电池(AA)或后备电池(CR2032)发生故障与切断电源, 储存的日期, 时间及税率将会删除。在这种情况下, 请重新输入日期, 时间及税率。
- Note:** The entered tax rate will remain stored even when the calculator is turned off. In case the adapter or batteries are disconnected, the entered rate will be cleared. In this case, please enter the rate again.

时间运算 / TIME CALCULATION

设定 / SETTING :

- 用于计算时间或工资等活动的的时间和成本估算, 如小时工资和成本估计。
Used for calculate the amount of time or duration of activities, such as wages hours and cost estimation.
- 用于切换12或24小时的时间计算模式。
Used to switch between 12 or 24 hour at time calculation mode.
- 用于切换上午或下午的时间计算。
Used to switch between AM or PM in time calculation.

例子/Example 1

兼职工作计算: 10:30 至 22:15, 每小时7美元 /
Calculating wages for a part-time job : 10:30 to 22:15 US\$7 per hour

计算 / Calculation	操作 / Operation	列印 / Print out
10:30 to 22:15 (24小时模式 / 24 hour mode)		10-30 22-15 11-45 = (工作时间 / Hours work)
每小时7美元 / US\$7 per hour		11.75 x 7. = 82.25 * (应付 / Amount due)

例子/Example 2

兼职工作计算: 8:30 至 11:45 加 1:00 至 5:30, 每月20天, 每小时9美元 /
Calculating wages for a part-time job: 8:30 to 11:45 am plus 1:00 to 5:30 pm, 20 days per month, US\$9 per hour

计算 / Calculation	操作 / Operation	列印 / Print out
8:30 am to 11:45 am (12小时模式 / 12 hour mode)		08-30 11-45 3-15 = 3-15 + 01-00 05-30 = 4-30 = 7-45 * (工作时间 / Hours work)
1:00 pm to 5:30 pm		7.75 x 20. x 9. = 1,395.00 * (应付 / Amount due)
每月20天 / 20 days per month 每小时9美元 / US\$9 per hour		20 9

例子/Example 3

兼职工作计算: 4:15 (上午) 加 3:30 (下午), 每小时12美元 /
Calculating wages for a part-time job: 4:15 hours (In morning) plus 3:30 hours (In afternoon), US\$12 per hour

计算 / Calculation	操作 / Operation	列印 / Print out
4:15 hours (上午 / In morning)		4-15 + 3-30 + 7-45 * 7.75 x 12. = 93.00 * (应付 / Amount due)
3:30 hours (下午 / In afternoon)		415 330 12
每小时12美元 / US\$12 per hour		

- ** 纪要输入值: 0到59。大于59的值会根据时间增加而自动调整。
- ** 计算范围: -99小时59分至99小时59分。如果输入/输出值超出了允许范围, 时间计算将溢出。
- ** Minutes input value : 0 to 59. Values greater than 59 are automatically adjusted by adding to the hour(s).
- ** Calculation range : -99 hours 59 minutes to 99 hours 59 minutes. If the input/output value out of the allowable range, the time calculation will overflow.

商业运算 / BUSINESS CALCULATION

- COST** 用于计算成本、售价及利润额。输入任意两项之值, 即可获得差额值 (如, 输入成本数值及售价即可获得利润额)。
- SELL**
- MARGIN**
- Used for calculating the cost, selling price and profit margin amount. Enter the value of any 2 items to obtain the balance value item. (e.g. enter the value of the cost and the selling price to obtain the profit margin %.)

计算 / Calculation	操作 / Operation	列印 / Print out
成本计算 / Calculating cost 销售价格 / Selling Price : \$2,000 利润率 / Profit Margin: 30% 成本 / Cost = ? (\$1,400)		2,000. ** 30. M% 1,400.00 C*
销售价格计算 / Calculating selling price 成本 / Cost \$1,500 利润率 / Profit Margin: 20% 销售价格 / Selling Price = ? (\$1,875)		1,500. C* 20. M% 1,875.00 **
利润率计算 / Calculating profit margin 成本 / Cost \$1,500 销售价格 / Selling Price: \$2,000 利润率 / Profit Margin = ? (25%)		1,500. C* 2,000. ** 25.00 M%

溢出运算 / OVERFLOW

计算 / Calculation	操作 / Operation	列印 / Print out
55000000000 x) 23 1265000000000 (溢出 / ERROR)		550,000,000,000. x 23. = 12,650,000,000.00 * 0. C
6 ÷ 0 = 0 (溢出 / ERROR)		6. ÷ 0. = 0. * 0. C

佳能电产香港有限公司
香港新界葵涌货柜码头路82至100号永德利广场第一期17楼
北京博怡嘉业科技股份有限公司
北京西城区西直门外大街1号西环广场T2号楼11层C11-C12