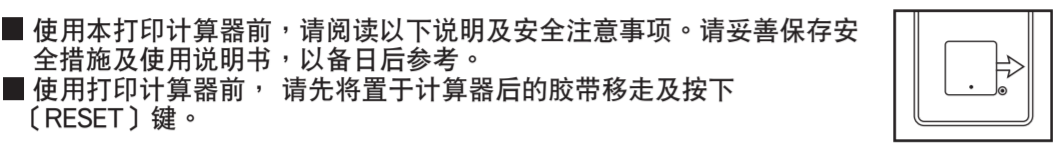




使用说明书 中文
User Manual EN

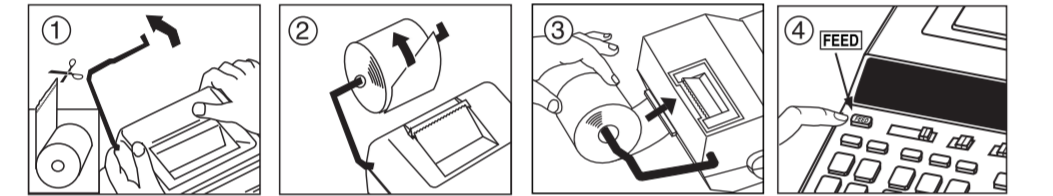


开始运作

- 使用本打印计算器前，请阅读以下说明及安全注意事项。请妥善保存安全措施及使用说明书，以备日后参考。
 - 使用打印计算器前，请先将置于计算器后的胶带移走及按下 [RESET] 键。
- 切勿在阳光直射下使用计算器，亦须避免把它放置于阳光猛烈、潮湿、肮脏及温度急速变化的地方。
 - 清洁机体时只能用于布，切勿使用清水或清洁剂。
 - 使用打印机时，请先检查打印纸卷是否已经装妥。
 - 避免于灰尘飞扬或满布铁屑物的地方使用计算器，因可能导致打印机电路故障。
 - 切勿使用坚硬物体按键或重物压在机体上，避免在机上留下刮痕。
 - 请将插头从插座中拔出来之前，关掉计算器。
 - 如有关电的故障发生，应马上截断电源，移除计算器和电源之间的障碍物，以便随时截断电源。
 - 电源插座应安装在设备附近。

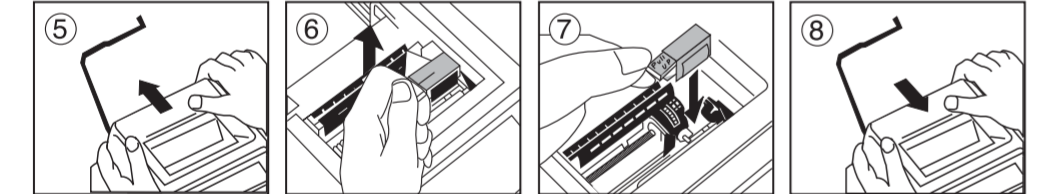
安装打印纸

- 抬起纸臂。(见图 ①)
- 当安装打印纸时，请如图所示将纸的边端切齐。
- 将新纸卷放入纸臂内。纸卷的边端须如图箭头所示方向放好。(见图 ②)
- 适合的纸卷：宽：57毫米 / 直径：86毫米
- 如图所示将纸卷放入机身后的缝隙。(见图 ③)
- 开启电源，如图所示按 [FEED] 键将纸卷推前。(见图 ④)



更换色带 (CP-13)

- 注意：请先关掉电源
- 移开打印机盖。(见图 ⑤)
 - 将旧墨轮提起及将它移走。(见图 ⑥)
 - 为了保持墨轮清晰的打印质量，在使用8卷纸后请更换墨轮。
 - 把新的墨轮插入先前位置。(见图 ⑦)
 - 盖回打印盖。(见图 ⑧)
 - 本机只适用CP-13墨轮
 - 请不要在墨轮上自行添补油墨，因为这会导致机械运作困难。



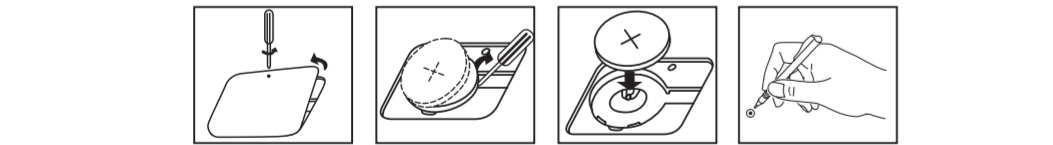
后备电池更换

当电源关闭或不能接驳交流电时，记忆后备电池便会保留税率、货币汇率、时间及日历的设定。

电 池：锂电池 (类型：CR2032 x 1)

电池寿命：记忆保留时间约2年

■ 后备电池更换后，请紧记按下 [RESET] 键及重新输入税率、货币汇率、时间及日历。



警告：

- 如果使用不正确的电池，可能会引致电池爆炸。
- 请根据地区法规，来处理电池。

电源开/关 / 打印 / 项目运算 / 货币转换选择器

- OFF ON CONV PRINT ITEM 关掉计算器。
- OFF ON CONV PRINT ITEM 打开计算器。输入内容和结果只会显示在萤光屏，但不能打印出来。
- OFF ON CONV PRINT ITEM 输入内容和结果都会显示在萤光屏，并能打印出来。
- OFF ON CONV PRINT ITEM 将开关设置于 "ITEM" 时，可以打印出 [+] 或 [-] 键被按过的次数 (可以达到999次)，当 [#/0]、[*]、[M/0] 和 [Mx] 这些键被按时，项目运算将被打印在纸卷的左面。
- OFF ON CONV PRINT ITEM 将开关设置于 "CONV" ，便会执行货币转换运算功能。输入内容和结果都会显示在萤光屏，并能打印出来。

小数点选择器

- DECIMAL 用于指定计算结果的 (0 , 1 , 2 , 3 , 4) 小数点位置。
- DECIMAL + (加位模式)：自动以2位小数执行加法和减法，便于货币计算。
- DECIMAL F (浮点小数点)：最多可显示至12位数字。

四舍五入选择器

ROUNDING 用于对计算结果只进位 (↑)，四舍五入 (5/4)，或只舍不入 (↓) 到预先选择的小数数位。

总计计算 / 税率设定选择器

GT OFF ON RATE SET / GT OFF ON RATE SET

总计运算：将开关设置在 "ON" 时，结果会被累积在总计记忆当中。当按 [*] 键时，便会显示出小总计结果，并列出G+ 符号。当按 [GT] 键时，便会显示出总计结果，并打印出G◇符号。连续按下两次 [GT] 键，便会显示出G✱，并同时清除总计。

GT OFF ON RATE SET

税率设定：将开关设置在 "RATE SET" 时，便会设定或重呼税率及货币汇率。

货币转换计算

GT OFF ON RATE SET / GT OFF ON RATE SET

将开关设置在 " " 及输入货币汇率，再按下 □¢1、□¢2 及 □¢3 键以保存货币汇率。

□¢1 □¢2 □¢3 按下 □¢1、□¢2 及 □¢3 键便可重呼已保存的货币汇率。

按下 □§ 键，将货币显示由 □¢1、□¢2 及 □¢3 换算至 □§。

按下 □¢1、□¢2 及 □¢3 键，将货币显示由 □§ 换算至 □¢1、□¢2 及 □¢3。

- 货币汇率是1或更高，您可以输入最多六个数字。而货币汇率低于1，您可以输入最多八个数字，包括数字零的整数和前零。(不多于七个有效数字，从左边第一个非零的数字开始计算。)

税项计算

TAX + 增加税款键：用于将税款加到显示的数位上。

TAX - 减去税款键：用于从显示的数位上减去税款。

注意：当电插头或后备电池 (CR2032) 发生故障不能接驳电源后，储存的税率、货币汇率、日期及时间将会删除。在这种情况下，请重新输入税率、货币汇率、日期及时间。

商业计算

COST SELL MARGIN 用于计算成本、售价及利润率。输入任意两项之值，即可获得差额值 (如，输入成本数值及售价即可获得利润额)。

自动节能

当电源 "打开"，在最后一次操作后约七分钟，计算器将自动切换至节能模式，橙色LED灯会亮。按下 [CE] 键，计算器将返回至正常计算模式。

数据溢出功能

在下列情况下，"E" (错误) 将会显示在萤光屏上，键盘也会被锁住，不能继续操作。按 [CE] 键可清除溢出。在以下情况下，会发生溢出情况：

- 1) 计算结果或内存数字超过12位数字。
- 2) 被0除时。
- 3) 连续操作的速度超过计算处理速度。(缓冲记忆溢出)

⚠ 电磁干扰和静电放电会导致显示异常，或导致记忆内容丢失或被更改。若出现此情况，可用圆珠笔尖 (或其他类似物体) 按下计算器背后的 [RESET] (重设按钮)。重设后，请紧记重新输入税率、货币汇率、时间及日历。

规格

电源：交流电压220V, 50Hz
使用温度：摄氏0至40度
运算容量：最高可达12位数字
尺寸：266毫米 (长) x 189毫米 (宽) x 62毫米 (高)
重量：803克
产品标准：GB/T4967-1995 / GB4943.1-2011
(若有任何更改，将不作另行通知)

粘贴有本标志的设备，是根据海拔2,000m进行安全性设计和评价的，因此，仅适用于海拔2,000m以下地区安全使用。当在海拔2,000m以上地区使用，可能会发生安全风险。

粘贴有本标志的设备，是仅根据非热带气候条件进行安全性设计和评价的，因此，仅适用于非热带气候条件下安全使用。当在热带气候条件下使用，可能会发生安全风险。

BEFORE STARTING

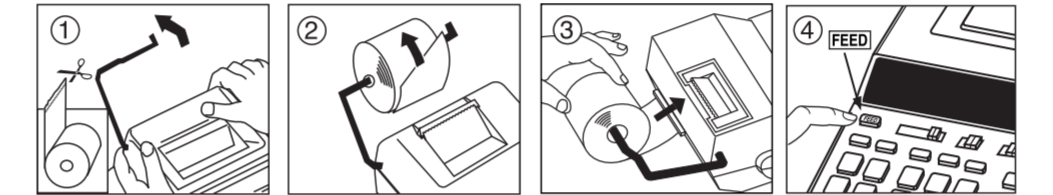
- Read all instructions before use. And keep it on hand for future reference.
- Remove the insulation tape and press the [RESET] button at the back of the calculator before use.

GENERAL MAINTENANCE

- 1) Do not use or leave the calculator under direct sunlight. Areas subject to rapid temperature changes, high humidity, dust and dirt should also be avoided.
- 2) Use a dry cloth to clean the casing of the unit. Do not use water or detergents.
- 3) Activate the printer when the paper roll is loaded.
- 4) Avoid using the calculator in places where there are iron filings, as this may affect the electrical circuits of the calculator.
- 5) Do not place anything on top of the machine, particularly on top of the printer mechanism.
- 6) Turn the calculator off before removing the plug from the electrical outlet.
- 7) In case of electrical fault (i.e. smoke), disconnect the plug from the electrical outlet immediately.
- 8) The outlet should be installed near the equipment and should be easily accessible.

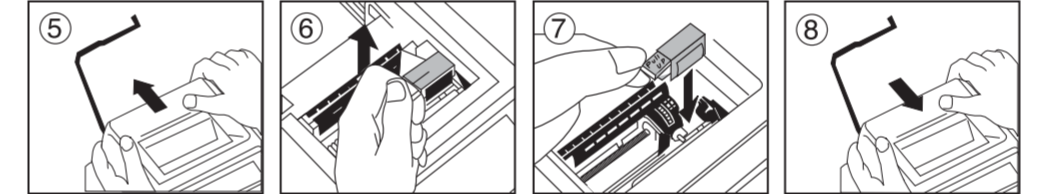
INSTALLING PRINTING PAPER

- 1) Lift up the paper arm (Figure ①).
- 2) Place the new paper roll on the arm. The edge of the paper should be positioned as shown (Figure ②).
- 3) Insert the paper into the slit at the back of the machine as indicated. (Figure ③)
- 4) Turn the calculator on. Press the paper feed key [FEED] to advance the paper (Figure ④).



REPLACING THE INK ROLLER (CP-13)

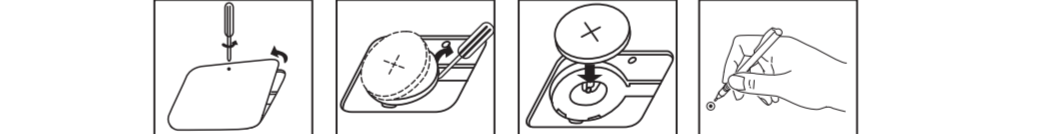
- Note: Turn power switch off.
- 1) Remove the printer cover . (Figure ⑤)
 - 2) Hold the tab of the ink roller. Lift the ink roller out of the base. (Figure ⑥)
 - To maintain clear printing, change the ink roller after about 8 rolls of printing paper have been used.
 - 3) Insert the new ink roller into position. (Figure ⑦)
 - 4) Replace the printer cover. (Figure ⑧)
 - Use only the Ink Roller CP-13.
 - Do not attempt to refill the ink roller, since this may cause mechanical difficulties.



REPLACING BACKUP BATTERY

Memory backup battery retains the tax rate, currency rate, clock and calendar setting, when the power is off or even when the AC cord is disconnected.
Battery : 1 Lithium battery (Type : CR2032)
Battery life : Backup time 2 years

■ After replacing the back-up battery, press the [RESET] button. After resetting be sure to set the tax rate, currency rate, clock and calendar setting again.



CAUTION

- Risk of explosion if battery is replaced with an incorrect type.
- Dispose of used batteries according to the instruction.

POWER ON/OFF / PRINT ON / ITEM COUNT / CURRENCY CONVERSION SELECTION SWITCH

- OFF ON CONV PRINT ITEM Turns calculator Off.
- OFF ON CONV PRINT ITEM Turns calculator On. Entries and results will appear on the display, but will not be printed out.
- OFF ON CONV PRINT ITEM Entries and results will appear on the display and will be printed out.
- OFF ON CONV PRINT ITEM Set the switch to "ITEM" to print the number of times the [+] and [-] keys have been pressed (up to 999). The item count will be printed on the left hand side of the paper roll when the [#/0], [*], [M/0] or [Mx] keys are pressed.
- OFF ON CONV PRINT ITEM Set the switch to "CONV" position to perform currency conversion calculation functions. Entries and results will appear on the display and printout.

DECIMAL POINT SELECTOR SWITCH

DECIMAL 0 1 2 3 4 F Used for designating the decimal point position (0, 1, 2, 3, 4) for calculated results.

DECIMAL + (Add-Mode) – Addition and subtraction functions are performed with an automatic 2-digit decimal. It is convenient for currency calculations.

DECIMAL F (Floating Decimal Point) – All effective numbers up to 12 digits are printed or displayed.

ROUNDING SWITCH

ROUNDING 0 5/4 F Used for round-up [↑], round-off [5/4], or round-down [↓] to the pre-selected decimal digits in the result.

GRAND TOTAL

GT OFF ON RATE SET / GT OFF ON RATE SET

GRAND TOTAL When the calculations are performed with the GT switch set to "ON", the totals are accumulated in the grand total memory. Each time [*] is pressed, the subtotal number is printed with the symbols G+. When [GT] is pressed, the intermediate grand total is printed with the symbols G◇. Press [GT] successively to get the grand total followed by the symbols G✱.

GT OFF ON RATE SET

CURRENCY CONVERSION FUNCTION

GT OFF ON RATE SET / GT OFF ON RATE SET

Store the Currency Rate – Set the switch to OFF ON RATE SET and enter the currency conversion rate and press □¢1 , □¢2 or □¢3 to store the currency conversion rate.

Recall the Currency Rate – Press □¢1 , □¢2 or □¢3 to recall the stored currency conversion rate.

Press □§ to convert currency figure displayed from □¢1 , □¢2 or □¢3 to the □§ .

Press □¢1 , □¢2 or □¢3 to convert displayed figure from □§ to □¢1 , □¢2 or □¢3 .

- For rates of 1 or greater, you can input up to six digits. For rates less than 1 you can input up to 8 digits, including 0 for the integer digit and leading zeros (though only 7 significant digits, counted from the left and starting with the first non-zero digit, can be specified).

TAX FUNCTION

TAX + Add Tax Key – Adding the tax amount to the displayed figure.

TAX - Deduct Tax Key – Deducting the tax amount from the displayed figure.

Note: The tax, currency rate, clock and calendar will clear if all power sources and backup battery (CR2032) are disconnected. In this case, please reset the settings.

COST-SELL-MARGIN FUNCTION

COST SELL MARGIN Calculate the cost, selling price and profit margin amount. Enter the value of any 2 items to obtain the balance value item. (e.g. enter the value of the cost and the selling price to obtain the profit margin %.)

AUTO POWER SAVE

When the power is turned "ON" and the calculator is not being used for approx. 7 minutes, the calculator will switch to power save mode automatically with orange LED light-up. Press [CE] key the calculator will return to normal calculation mode.

OVERFLOW FUNCTION

In the following cases, when "E" is displayed, a dotted line is printed, the keyboard is electronically locked, and further operation is impossible. Press [CE] to clear the overflow. The overflow occurs when:

- 1) The result or the memory content exceeds 12 digits to the left of the decimal point.
- 2) Dividing by "0".
- 3) The sequential operation speed is faster than the calculation processing speed. (Buffer Register Overflow)

⚠ Electromagnetic interference or electrostatic discharge may cause the display to malfunction or the contents of the memory to be lost or altered. Should this occur, use the tip of a ball point pen (or similar sharp object) to press the [RESET] button at the back of the calculator. After resetting, be sure to set the tax rate, currency rate, clock and calendar again.

SPECIFICATIONS

Power Source: AC 220V, 50Hz
Operation Temperature: 0°C to 40°C
Calculating Capacity: 12 digits maximum
Dimension: 266mm (L) x 189mm (W) x 62mm (H)
Weight: 803g
(Subject to change without notice)

佳能电产香港有限公司
香港新界葵涌货柜码头路82-100号永得利广场第1期17楼
北京通泰嘉怡科技有限责任公司
北京市西城区北展北街华远企业中心D座1单元505室

日历及时间功能 / Clock and Calendar Function

设定 / Setting: DECIMAL ROUNING GT OFF ON CONV
 0 1 2 3 4 5 6 7 8 9
 0 1 2 3 4 5 6 7 8 9
 OFF ON RATE SET PRINT ITEM

- 用于选择日历或时间式样。
Used to switch between calendar or clock mode.
- 在时间功能设定时，用于选择12或24小时时间式样。
Used to switch between 12 or 24 hours at clock mode.
- 在日历及时间式样时，用于设定日子及时间。
Used to set the date and time in calendar & clock mode.
- 在时间功能设定时，用于选择上午 (AM) 或下午 (PM) 式样。
Used to switch between AM or PM at clock mode time setting.
- 在日历的式样时，用于选择年、月、日的格式YYYY/MM/DD, DD/MM/YYYY或MM/DD/YYYY。
Used to select date format between "YYYY/MM/DD", "DD/MM/YYYY" or "MM/DD/YYYY" at calendar mode.

日期设定 / Date Setting
 例子 / Example : 2017年10月12日 / 2017 October 12

操作 / Operation	显示 / Display	列印 / Print Out
01-01-2016	01-01-2016	01-01-2016
10-12-2017	10-12-2017	10-12-2017
(返回计算模式 / Return to calculation mode)	0.	C

时间设定 / Time Setting (例子 / Example : 3 : 18 pm)

操作 / Operation	显示 / Display	列印 / Print Out
12-00-18 A	12-00-18 A	12-00-18 A
03-18-00 P	03-18-00 P	03-18-00 P
(返回计算模式 / Return to calculation mode)	0.	C

运算例子 / Calculation Examples

设定 / Setting: DECIMAL ROUNING GT OFF ON CONV
 0 1 2 3 4 5 6 7 8 9
 0 1 2 3 4 5 6 7 8 9
 OFF ON RATE SET PRINT ITEM

- 如屏幕所示与如下例子不符，请按图示调整选择器。
If switches below do not match the example, please set switches as shown.

计算 / Calculation	操作 / Operation	列印 / Print Out
2+(3x4)-5=9	2 + 3 x 4 = 5 - =	0. C 2.00 + 3. x 4. = 12.00 * 12.00 + 5.00 - 9.00 = 9.00 * 27.00 *
-2x3=-6	2 x 3 =	-2. x 3. = -6.00 *
3³=27	3 x =	3. x 3. = 9.00 * 9.00 * 27.00 *
1/7=0.14285714285	DECIMAL 7 ÷ =	7. ÷ 7. = 1.000 * 1.000 * 0.143 *
\$12.55+\$15.75-\$5.30 =\$23.00	DECIMAL 1255 + 1575 + 530 - =	0. C 12.55 + 15.75 + 5.30 - 23.00 =
8+3x3.7+9=18.866666666666	DECIMAL 8 + 3 x 9 + =	8. + 3. x 3.7 = 9.86666666664 * 9.86666666664 + 9. + 18.8666666666 *
123x 756 (456)=56,088	DECIMAL 123 x 756 (456) =	123. x 456. = 56,088.00 *
123x 455 (6)=56,088	DECIMAL 123 x 455 (6) =	123. x 456. = 56,088.00 *

非计算 / Data Printout

计算 / Calculation	操作 / Operation	列印 / Print Out
Oct. 17 2017 1,860 1,420	10 17 2017 1860 + 1420 +	#10-17-2017----- 1,860.00 + 1,420.00 +
Oct. 18 2017 2,380 2,200	10 18 2017 2380 + 2200 +	#10-18-2017----- 2,380.00 + 2,200.00 +
+) 2,200 7,860	2200 + =	2,200.00 + 7,860.00 *

总计计算 / Grand Total Calculation

计算 / Calculation	操作 / Operation	列印 / Print Out
500+103+32 = 635 +) 500+96+44 = 640 1,275	GT OFF ON RATE SET 500 + 103 + 32 + 500 G+ 96 + 44 + 640.00 G+ 1,275.00 G 1,275.00 G*	500.00 + 103.00 + 32.00 + 635.00 G+ 500.00 + 96.00 + 44.00 + 640.00 G+ 1,275.00 G 1,275.00 G*

项目计算 / Item Count

计算 / Calculation	操作 / Operation	列印 / Print Out
18 1) 14 2) +) 23 3) 55 - 20 4) +) 10 5) 45	GT OFF ON CONV OFF ON RATE SET PRINT ITEM 18 + 14 + 23 + 55 + 20 - 10 - 45 *	18.00 + 14.00 + 23.00 + 003..... 55.00 20.00 - 10.00 - 005..... 45.00 *

百分比计算 / Percentage Calculation

计算 / Calculation	操作 / Operation	列印 / Print Out
2,000+(2,000x12%) =2,240	OFF ON CONV PRINT ITEM 2000 x 12 % 240.00 * 2,240.00 +%	2,000. x 12. % 240.00 * 2,240.00 +%
2,000-(2,000x15%) =1,700	2000 x 15 % 300.00 * 1,700.00 -%	2,000. x 15. % 300.00 * 1,700.00 -%

记忆计算 / Memory Calculation

计算 / Calculation	操作 / Operation	列印 / Print Out
125+78 = 203 -) 75+103 = 178 25	125 + 78 + 75 + 103 + M+ 178.00 M- 25.00 M 25.00 M*	0. C 125.00 + 78.00 + 203.00 * 203.00 M+ 75.00 + 103.00 + 178.00 * 178.00 M- 25.00 M 25.00 M*

货币转换计算 / Currency Conversion Calculation

计算 / Calculation	操作 / Operation	列印 / Print Out
储存货币汇率/ Currency Rate Store \$ = 1 (US\$) C1 = 0.8233 (EURO) C2 = 0.5419 (€) C3 = 107.08 (JPY)	GT OFF ON CONV OFF ON RATE SET PRINT ITEM 0 8233 C1 0 5419 C2 107 08 C3	#1-----0.8233 C #2-----0.5419 C #3-----107.08 C
货币转换/Convert Currency 欧元/Euro 35 = 美元/US\$ (\$42.51)	GT OFF ON RATE SET 35 C1	0. C 35. = #1-----42.51 *
美元/US \$78 = 日元/JPY¥? (¥8352.24)	78 C3	78. #3-----107.08 * 8,352.24 *
英镑/£100 = 美元/US\$? (\$184.54)	100 C2	100. = #2-----0.5419 * 184.54 *
*1订明美元中间价的小数位 / Specifying the Number of Decimal Places for Intermediate US Dollar Amounts 欧元/Euro 1,000 = 英镑/£? 欧元/Euro 1,000 = 美元/US\$1214.624 = 英镑/ £658.20	GT OFF ON RATE SET 1000 C1 C2 C3	0. C 1,000. = #1-----0.8233 1,214.624 #2-----0.5419 658.20 *
重呼货币汇率/ Recall currency rate	GT OFF ON RATE SET C1 C2 C3	#1-----0.8233 C #2-----0.5419 C #3-----107.08 C

税项计算 / Tax Calculation

计算 / Calculation	操作 / Operation	列印 / Print Out
设定税率/Set Tax Rate 税率/Tax rate=5%	OFF ON CONV PRINT ITEM GT OFF ON RATE SET 5 TAX +	5. Δ%
税率增加/Add Tax Amount 价格2,000元不含税/ Price \$2,000 without tax 税率/Tax = ? (\$100) 销售价含税/Selling Price with tax = ? (\$2,100)	GT OFF ON RATE SET 2000 TAX +	2,000. Δ+ 5. % 100.00 Δ 2,100.00 *
税率减少/Deduct Tax Amount 销售价3,150元含税 Selling Price \$3,150 with tax 税率/Tax = ? (\$150) 价格含税/Price without tax = ? (\$3,000)	3150 TAX -	3,150. Δ- 5. % -150.00 Δ 3,000.00 *
重呼税率/Recall Tax Rate	GT OFF ON RATE SET TAX -	5. Δ%

时间计算 / Time Calculation

- 用于计算时间量或活动的持续时间，比如工资、时间和成本估算。
Used to calculate the amount of time or duration of activities, such as wages hours and cost estimation.
- 用于在时间计算模式下在12或24小时之间进行切换。
Used to switch between 12 or 24 hour at time calculation mode.
- 用于在时间计算过程中在上午(AM)或下午(PM)之间进行切换。
Used to switch between AM or PM in time calculation.

实例1 / Example 1:
 计算兼职工作的工资: 从10:30 到 22:15，每小时7美元。
 Calculating wages for a part-time job : 10:30 to 22:15, US\$7 per hour

计算 / Calculation	操作 / Operation	列印 / Print Out
10:30 to 22:15 (24小时模式/24 hour mode)	GT OFF ON RATE SET 1030 2215	0. C 12..... 24..... 10-30 22-15 11-45 = 11-75 x 7. = 82.25 *
每小时7美元/US\$7 per hour	7	7. x 82.25 *

实例2 / Example 2:
 计算兼职工作的工资: 从上午8:30 到 11:45加上从下午1:00到5:30，每月20天，每小时9美元。
 Calculating wages for a part-time job: 8:30 to 11:45 am plus 1:00 to 5:30 pm, 20 days per month, US\$9 per hour

计算 / Calculation	操作 / Operation	列印 / Print Out
上午8:30到11:45/8:30 am to 11:45 am (12小时模式/12 hour mode)	830 1145	0. C 12..... 08-30 11-45 3-15 = 3-15 + 01-00 05-30 4-30 = 7-45 * 7.75 x 20. x 9. = 1,395.00 *
下午1:00到5:30 1:00 pm to 5:30 pm	100 530	100. x 530. =
每月20天/20 days per month 每小时9美元/US\$9 per hour	20 9	20. x 9. = 1,395.00 *

实例3 / Example 3:
 计算兼职工作的工资: 4:15小时 (上午) 加3:30小时 (下午)，每小时12美元。
 Calculating wages for a part-time: 4:15 hours (In morning) plus 3:30 hours (In afternoon), US\$12 per hour

计算 / Calculation	操作 / Operation	列印 / Print Out
4:15 小时/hours (上午/In morning) 3:30 小时/hours (下午/In afternoon)	415 330	0. C 12..... 4-15 + 3-30 + 7-45 * 7.75 x 12. = 93.00 *
每小时12美元/US\$12 per hour	12	12. = 93.00 *

- ** 分钟输入值 : 从 0 到 59。通过添加小时数自动对超过59的数值进行调整。
Minutes input value : 0 to 59. Values greater than 59 are automatically adjusted by adding to the hour(s).
- ** 计算范围 : 从-99小时59分到99小时59分。如输入 / 输出值超出许可范围，时间计算将溢出。
Calculation range: -99 hours 59 minutes to 99 hours 59 minutes. If the input/output value out of the allowable range, the time calculation will overflow.

商业计算 / Business Calculation

计算 / Calculation	操作 / Operation	列印 / Print Out
成本计算/Calculating Cost 销售价/Selling Price : \$2,000 利润率/Profit Margin : 30% 成本/Cost = ? (\$1,400) 利润额/Margin Value : \$600	2000 SELL 30 MARGIN MARGIN	2,000. ** 30. M% 1,400.00 CC 30. M% 600.00 MA
销售价计算/Calculating Selling Price 成本/Cost : \$1,500 利润率/Profit Margin : 20% 销售价/Selling Price = ? (\$1,875) 利润额/Margin Value : \$375	1500 COST 20 MARGIN MARGIN	1,500. CC 20. M% 1,875.00 ** 20. M% 375.00 MA
利润率计算/Calculating Profit Margin 成本/Cost : \$1,500 销售价/Selling Price : \$2,000 利润率/Profit Margin = ? (25%) 利润额/Margin Value : \$500	1500 COST 2000 SELL MARGIN	1,500. CC 2,000. ** 25.00 M% 500.00 MA

复查计算 / Double Check Calculation

设定 / Setting: DECIMAL ROUNING GT OFF ON CONV
 0 1 2 3 4 5 6 7 8 9
 0 1 2 3 4 5 6 7 8 9
 OFF ON RATE SET PRINT ITEM

- 在选择“小数点”、“四舍五入”和“GT”设置后，在复查过程中请保持同样的设置，以便获取准确的检查结果。
After selecting the setting of "Decimal", "Rounding" and "GT", please keep the same setting in the process of Double Check Function in order to obtain accurate checking result.
- 用于启动复查输入功能。“CHE”将出现在显示屏上。
Used to start the Check record process. "CHE" will appear on the display.
- 用于启动复查功能。复查功能用于将第二次输入与第一次计算步进行作对比。“CHE StArt”将出现在显示屏上。
Used to start a Check process. The Check process compares the user input with the previous recorded operation queue. "CHE StArt" will appear on the display.

计算 / Calculation	操作 / Operation	列印 / Print Out
400+280-78=602	400 + 280 + 78 - =	0. C* 400.00 + 280.00 + 78.00 - 602.00 *
正确输入/Correct entry	MODE START CHECK 400 + 280 + 78 - =	(开始输入/ Start entry) 400.00 + 280.00 + 78.00 - 602.00 *
不正确输入/Incorrect entry	START CHECK 400 + 280 + 87 - =	(开始复查/ Start check) 400.00 + 280.00 + 87.00 - 602.00 *
400+280-87=593	400 + 280 + 87 - =	(正确输入以蓝色打印/ Correct entry in blue color) 400.00 + 280.00 + 87.00 - 593.00 *
	MODE START CHECK	(不正确输入以红色打印/ Incorrect entry in blue color) 400.00 + 280.00 + 87.00 - 593.00 *

- 开关设置必须与第一次和第二次操作输入相同。如果开关不相同，将会打出以下信息。
* **001** - 小数点设置不同。
* **002** - 四舍五入设置不同。
- The switches settings must match the 1st and 2nd operation input. If the settings do not match, the below message will print out.
* **001** - Decimal point setting is difference
* **002** - Rounding setting is difference

- 本计算器可记录100个计算步复查过程，如果超过记忆上限，将无法使用复查功能，并且“E CHE St FULL”信息将会出现在显示屏上。
This calculator has a 100 steps memory capacity, which is useful for check process. If out of the memory capacity, it is not allowed to enter into the Double Check function and "E CHE St FULL" message will appear on the display

- 在第一次输入中，按下 **MODE** 键，结束计算，进行检查，将会打印出“.....”。
- 在第二次输入中，按下 **MODE** 键，终止检查过程，将会打印出“**000**”。
- In first input, press **MODE** key to end the calculation for checking. "....." will print out.
- In second input, press **MODE** key to abort the check process. "**000**" will print out.

溢出 / Overflow

计算 / Calculation	操作 / Operation	列印 / Print Out
550000000000 x) 23 1265000000000 (溢出/Error)	550000000000 x 23 = CE CE	550,000,000,000. x 23. = 12,650,000,000.00 * 0. C
6 ÷ 0 = 0 (溢出/Error)	6 ÷ 0 =	6. ÷ 0. = 0. * 0. C