

Canon

LS-1200T

POWER SUPPLY

This calculator comes with a dual power source. The duration of lithium battery depends entirely on individual usage.

■ Electromagnetic interference or electrostatic discharge may cause the display to malfunction or the contents of the memory to be lost or altered. Should this occur, use the tip of a ball point pen (or similar sharp object) to press the [RESET] button on the back of the calculator.

After resetting, be sure to set the tax rate again.

SPECIFICATION

Power Source: Solar cell and lithium battery (CR2016 x 1)

Automatic power-off: approx. 7 minutes

Usable Temperature: 0 to 40°C

Dimensions: 96.5mm (W) x 149mm (L) x 12.5mm (H)

Weight: 97.5 g

(Subject to change without notice)

English



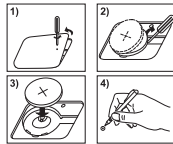
REPLACE BATTERY

Battery: 1 Lithium battery (Type: CR2016)

After replace the battery, press the [RESET] button.

After resetting be sure to set the tax rate again.

Caution Risk of explosion if battery is replaced by an incorrect type dispose of used batteries according to the instruction. Dispose of batteries according to local regulations. Do not dispose as household waste.



CATU DAYA

Kalkulator ini dilengkapi dengan dua buah sumber daya.

Umur baterai lithium hanya tergantung pada penggunaan masing-masing.

■ Gangguan elektromagnetik atau luclutan elektrostatik dapat menyebabkan kerusakan pada tampilan atau isi di dalam memori hilang atau berubah. Apabila yang demikian ini terjadi, menggunakan ujung pena bolpoin (atau benda tajam yang sama) untuk menekan [RESET] onthe tombol belakang kalkulator. Setelah pengaturan ulang, pastikan untuk menetapkan tarif pajak lagi.

SPESIFIKASI

Sumber Daya: Sel matahari dan baterai lithium (CR2016 x 1)

Fungsi catu daya mati otomatis : perkiraan 7 menit

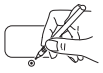
Suhu Operasi: 0°C to 40°

Dimensi: 96.5 mm (L) x 149mm (P) x 12.5mm (T)

Berat: 97.5g

(Dapat berubah tanpa pemberitahuan)

Bahasa Indonesia



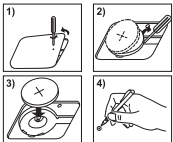
GANTI BATERAI

Baterai : 1 baterai lithium (Jenis: CR2016)

Setelah mengganti baterai, tekan tombol [RESET] tombol.

Setelah pengaturan ulang pastikan untuk menetapkan tarif pajak lagi.

Hati-hati Risiko ledakan jika baterai diganti dengan jenis yang tidak buang baterai digunakan sesuai instruksi. Buang baterai sesuai dengan peraturan lokal. Jangan baterai sebagai limbah rumah tangga.



CALCULATION 	OPERATION 	DISPLAY
▼ Mixed 140-35+22=127 2x 2 2/3 =6 -7x 99 9/10 =-63 (2+4)÷3x8.1=16.2	(CA) 140 - 35 + 22 = 2 x 2 2/3 = 7 - 99 9/10 = 2 + 4 ÷ 3 x 8 . 1 =	(0.) (127.) (6.) (-63.) (16.2)
▼ Percentage 1200+(1200x20%)=1,440 1200-(1200x20%)=960	1200 + 20 % 1200 - 20 %	(1'440.) (960.)
▼ Memory 3x4= 12 -) 6÷0.2= 30 -18 +) 200 182	(CA) 3 x 4 (Ma) 6 ÷ 0.2 (Mr) (M) 200 (Ma) (M) (Recall Memory) (M) (Clear Memory)	(0.) (M 12.) (M 30.) (M -18.) (M 200.) (M 182.) (182.)
▼ Tax Calculation Set Tax Rate Rate: 5% Recall Tax Rate Add the Tax Amount Price \$2,000 without tax Selling Price with tax = ? (\$2,100) Tax= ? (\$100) Deduct the Tax Amount Selling Price \$3,150 with tax Price without Tax = ? (\$3,000) Tax = ? (\$150)	(CA) (TAX+) 5 (TAX+) (CA) (TAX-) 2000 (TAX+) (TAX+) 3150 (TAX-) (TAX-)	(TAX% 5.) (TAX% 5.) (TAX+ 2'100.) (TAX 100.) (TAX- 3'000.) (TAX 150.)
▼ Overflow 12345678x789000 =9740739942000 (Error) 6÷0=0 (Error)	12345678 x 789000 = (E) 6 ÷ 0 = (E)	(E 9.74073994200) (9.74073994200) (E 0.) (0.)

CANON ELECTRONIC BUSINESS MACHINES (H.K.) CO., LTD.
 17/F., Tower One, Ever Gain Plaza, 82-100 Container Port Road, Kwai Chung,
 New Territories, Hong Kong
CANON MARKETING (MALAYSIA) SDN BHD.
 Block D, Peremba Square, Saujana Resort, Section U2, 40150 Shah Alam,
 Selangor Darul Ehsan, Malaysia
CANON KOREA BUSINESS SOLUTIONS INC.
 #168-12, Samseong-dong, Gangnam-gu, Seoul, Korea